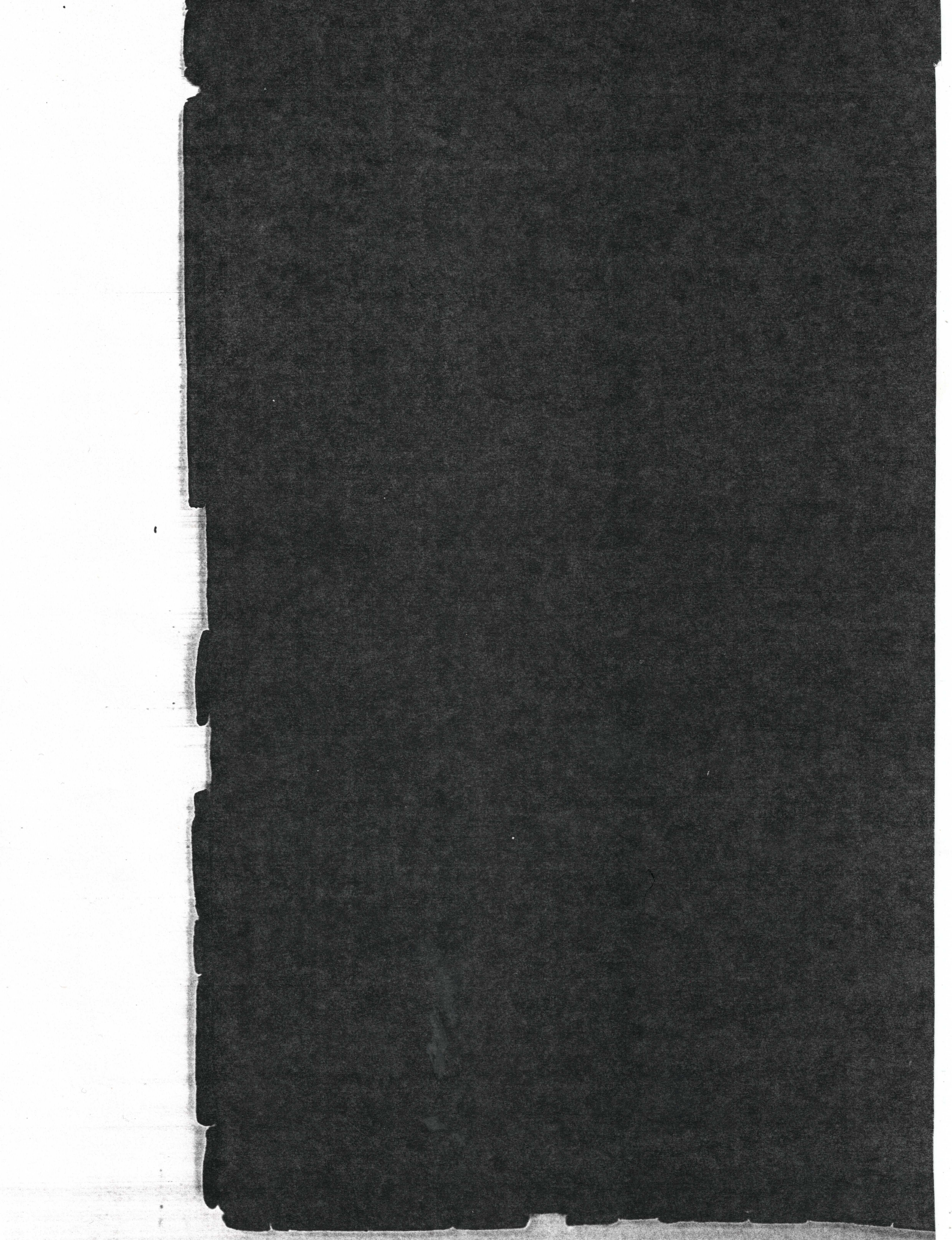


*Williamizgon*  
1941

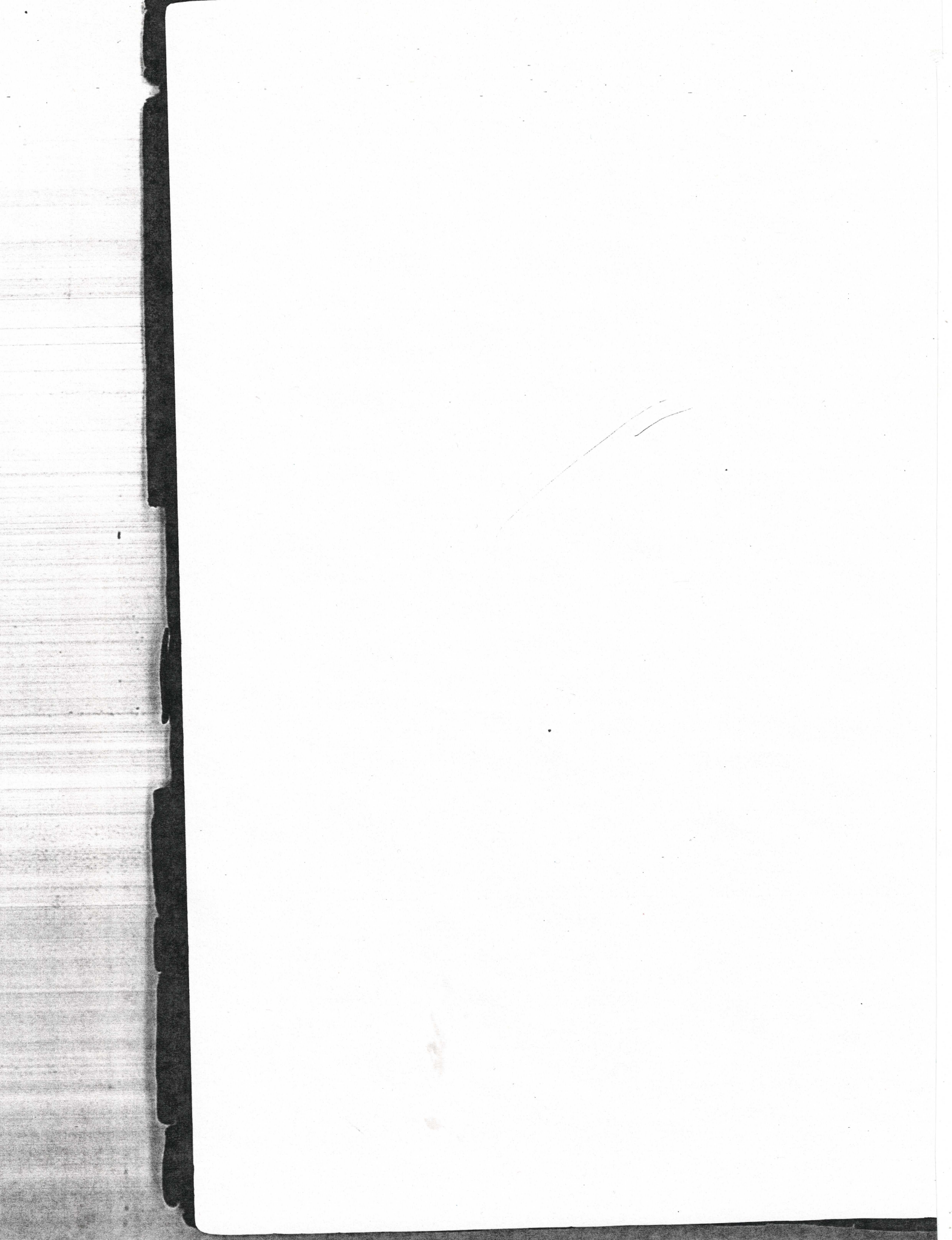






Karen Masnor





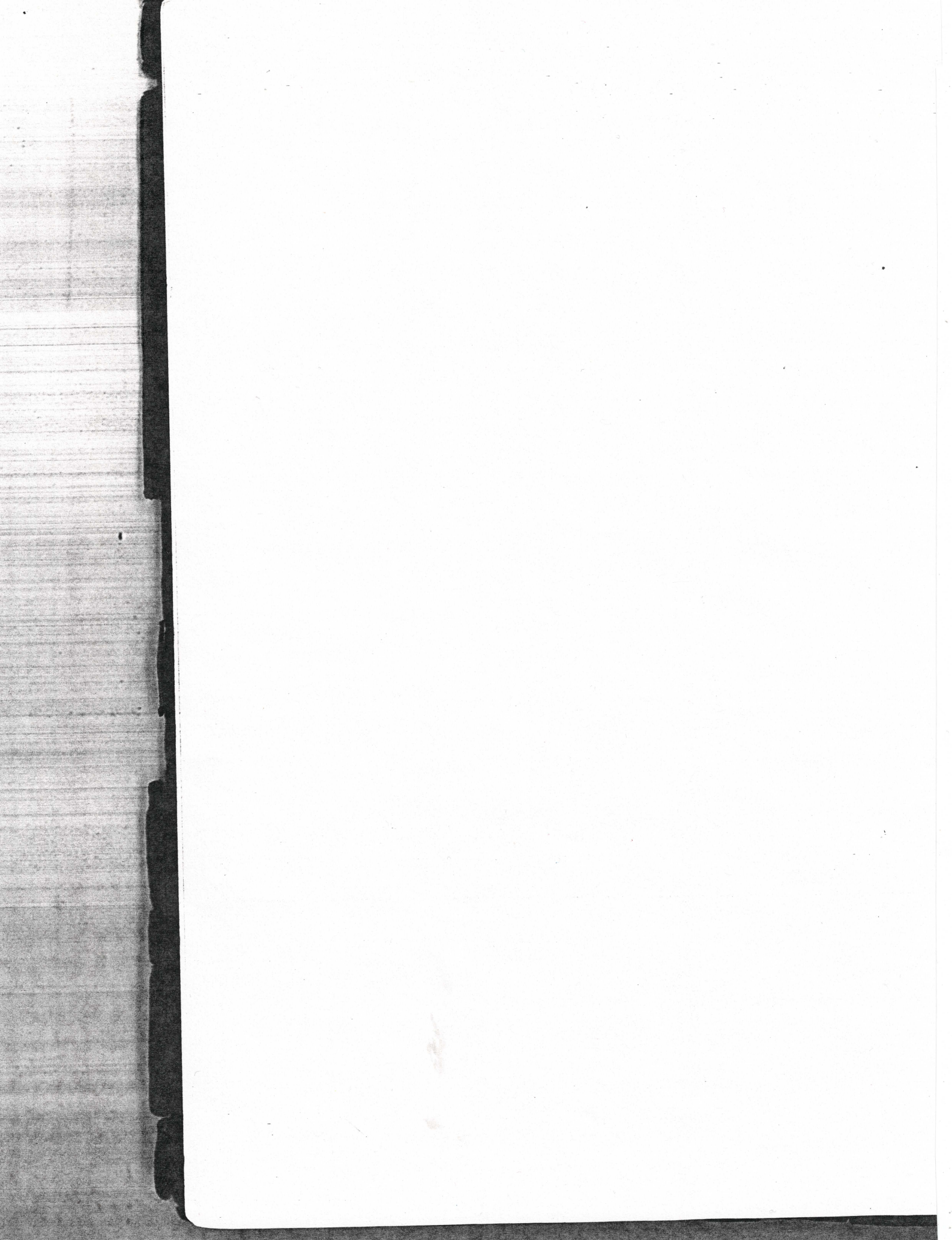


---

Ex Libris

---







The 1941 Willamizzou

---

The  
**WILLAMIZZOU**  
1941



Published By The  
**SENIOR CLASS**  
of the Willow Springs High School



## FOREWORD . . . .

Within the covers of this book, the graduating class of 1940-41 attempts to show the events and activities that have happened during the past year.



## CONTENTS . . . .

- I. ADMINISTRATION
- II. CLASSES
- III. DEPARTMENTS
- IV. SPORTS
- V. ACTIVITIES
- VI. ADVERTISEMENTS



## DEDICATION

President—C. H. Burchard

Secretary—J. C. Ferguson

Treasurer—W. L. Forester

Members: W. E. Armstrong

Mrs. Glenwood Myers

Mrs. L. Bible

E. E. Ogden

Dr. J. S. Cottrell



To the school board we extend our deepest appreciation for their choice of an excellent faculty and for their fullest cooperation in our extensive building program. To this board we dedicate this book.



INTO THE FUTURE

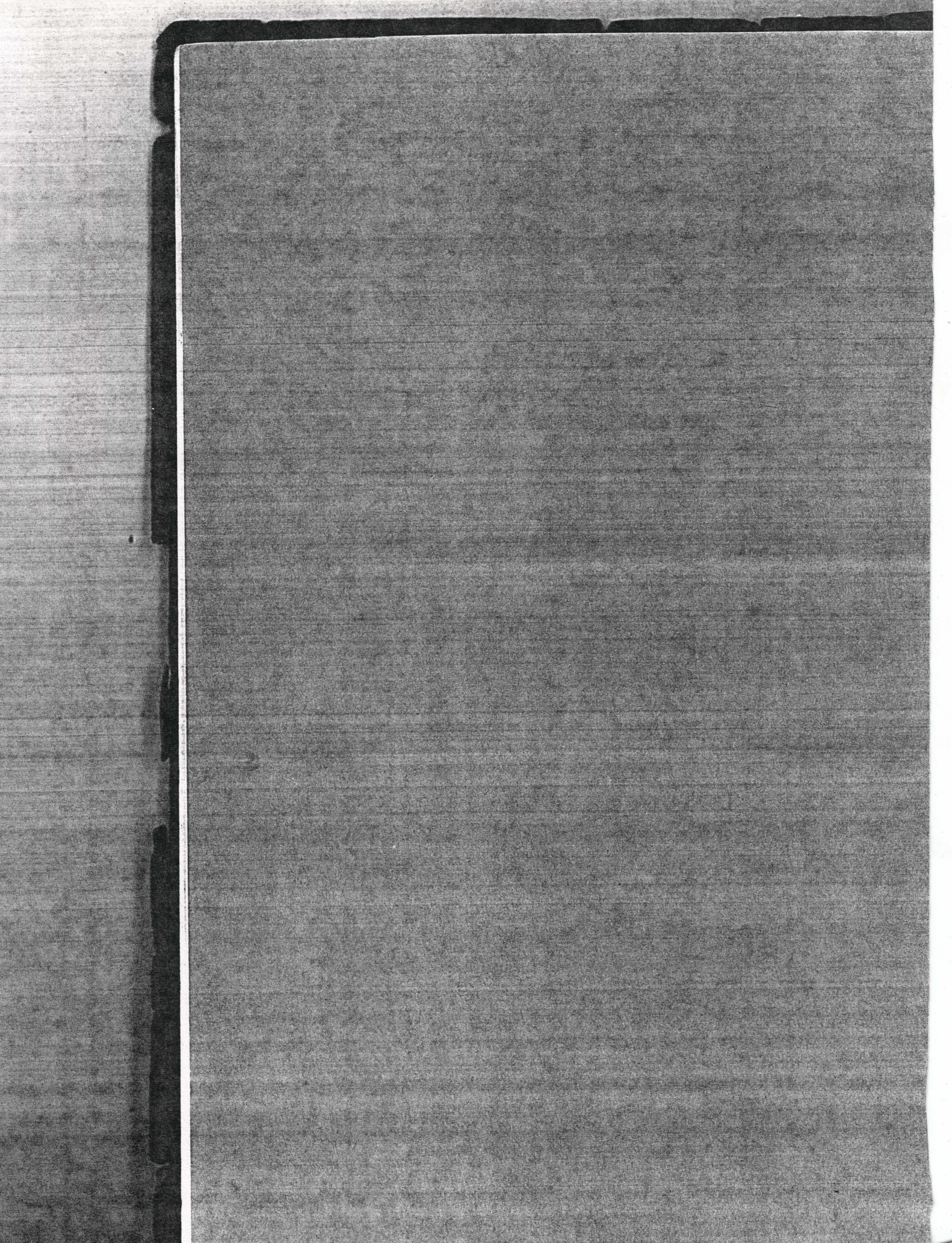




BOOK I

**ADMINISTRATION**







## The 1941 Willamizzou

---



W. C. GRIMES

B. S. in Ed., S. T. C.  
A. M., U. of Mo.

You are leaving your Alma Mater to become citizens, American citizens, in the near future. And what is an American citizen?

He is an American who, leaving behind ancient prejudices, receives new ideas from a new mode of life. America is his great Alma Mater.

Here all races are melted into one great race of men, free men, tolerant, and with a strong impulse toward the ideal of the universal brotherhood of man.

Citizens of America, we salute you and wish you a long and happy life in a country yet free, the haven of all freedom-loving peoples, the United States of America.

SUPERINTENDENT



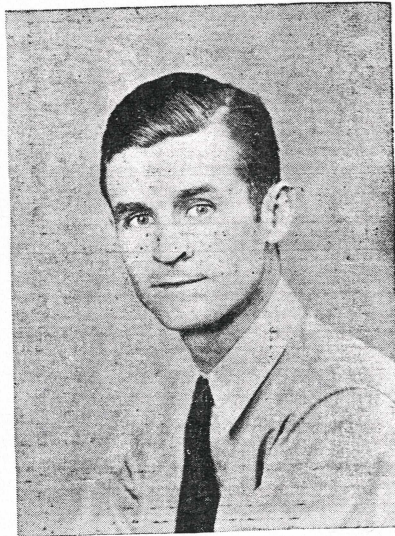
T. G. MUNFORD

Principal—Athletic Director;  
Science; B. S.—Education; Spring-  
field Teachers College.



The 1941 Willamizzou

---



T. N. DAVIS

Vocational Agriculture; B. S.—  
Missouri University; Central Col-  
lege, Fayette



MRS. T. G. MUNFORD

Social Science; Central Missouri  
State Teachers College; South-  
west Missouri State Teachers  
College



BESS CLOUGH

English; Teacher Training; B. A.  
—University of Iowa; M. A.—  
University of Iowa; University of  
Colorado; University of Chicago.



WILLIAM SHELTON

Music; B. S. Education; Spring-  
field Teachers College; Graduate  
work, Northwestern University,  
Evanston, Illinois



The 1941 Willamizzou

---



ELIZABETH GOOCH  
Study Hall Supervisor



GEORGIA RICHMAN  
Mathematics; B. S.—Education;  
Southwest Missouri State Teachers  
College



KATHARINE GREENE  
Vocational Home Economics; B.  
S.—Education; Northeast Mis-  
souri State Teachers College



MARY FRANCES BREWINGTON  
English; B. S.—Education; South-  
east Missouri State Teachers Col-  
lege; Graduate work, Missouri  
University



The 1941 Willamizzou

---



W. W. DENNEY

Literary Supervisor; A. B. Springfield Teachers College



WILMA VANCE

Physical Education; B. S.—Physical Education and Music; George Peabody College, Nashville, Tenn.



LORENE MASNOR

Commerce  
Springfield Teachers College  
B. S. in Education



SAMMIE LOVAN

School Secretary



## HOME ROOMS

History was in the making in the Willow Springs High School in 1940-1941. For the first time the system of Home Rooms was inaugurated. The student body was divided into groups of thirty members each; to each group a teacher-counselor was assigned. Then the groups were organized and representatives from each elected to the student council.

The counselors may call their pupils together for discussions, for disciplinary matters, or for games and entertainment.

Many of the pupils like this idea of being a member of a small organized group as well as a member of the student body. They also like it because each room has a member on the student council. Through their elected representatives they have a voice in the government of the school.

When dictators are trying to rule the world and force their systems of government on helpless people, it is, indeed, with grateful hearts that we students embrace this most democratic form of student government.



## PARENT-TEACHER ASSOCIATION

Mrs. DeRoy Frazee, president

Mrs. G. J. Phillips, vice-president

Mrs. Earl E. Barkley, secretary

Mrs. Ralph Hankins, treasurer

Forty-five paid members

During the past year the Parent-Teacher Association of Willow Springs has had many interesting programs concerning the new phases of school work which are being introduced in many other schools.

In connection with these studies a radio was purchased this year for use in the Junior high school.



## DOORWAY TO EDUCATION



### SCHOOL SONG

Well, here's to you dear old Willow Springs!  
The school of many pleasant memories;  
Playing tennis, playing basketball,  
Study is the very best of all;  
Our tasks are long, yet we never fail,  
Keep at it ever is the golden rule;  
So come, while I join with you  
And give three cheers for

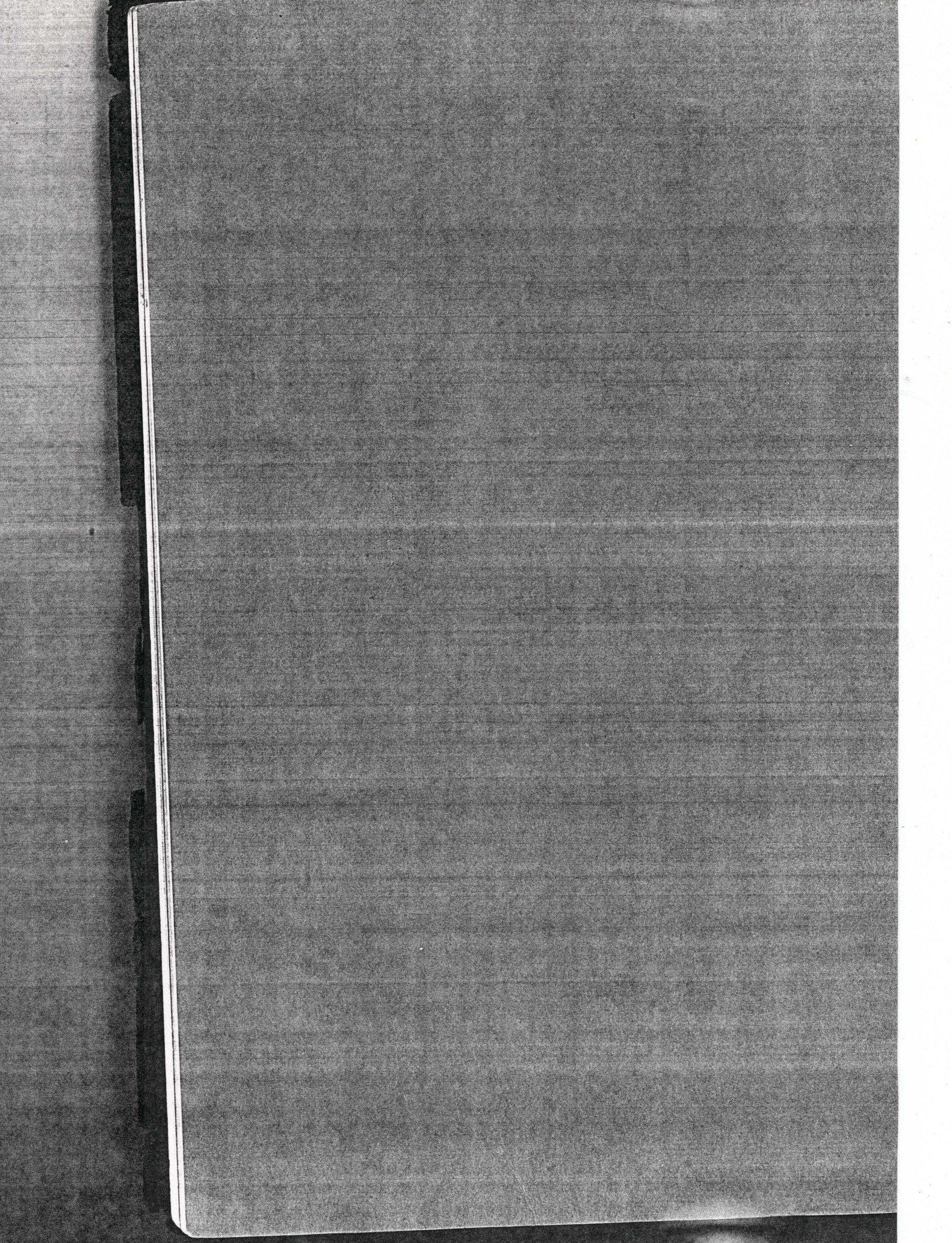
DEAR OLD WILLOW SPRINGS!



BOOK II

**CLASSES**







## SENIOR CLASS



Vice President—Gene Clingan



President—Ruth Ward



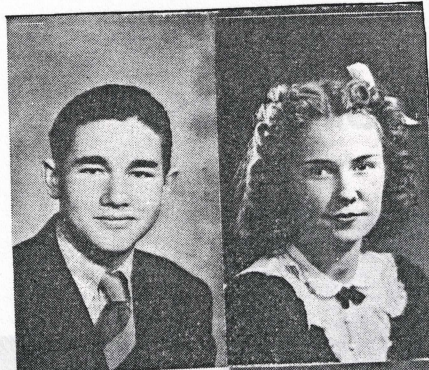
Sec'y-Treas.—Jeweldeen Skaggs

Motto—Optimus Omnium.

Colors—Maroon and White

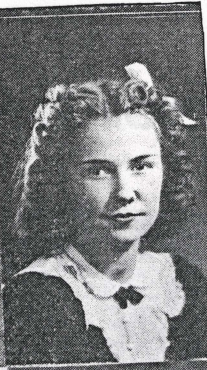


## The 1941 Willamizzou



**Keith Peterson**

Tall, dark and———Track '41; FFA '38, '39, '40, '41; Stock Judging '38, '39, '40, '41.



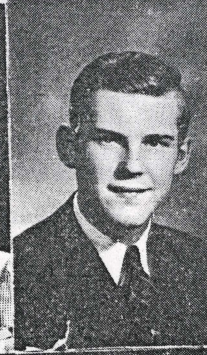
**Frances Mitchell**

I think; therefore, I am.



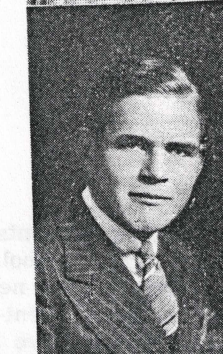
**June Schneller**

An asset to our school is graduating.—



**Bill Rothgeb**

Needed, an efficient alarm clock.—Band '38, '39, '41; Football '39, '40, '41; Junior Play '40; Tennis '39, '40, '41; Track '41; Willamizzou '41; May Festival '41; Senior Carnival '41.



**Claude Ferguson**

As for me—I guess I'll be the boss.—Football '39, '40, '41; FFA '38, '39, '40, '41; Literary '40; Red and White Recorder Staff '40; Red and White Recorder Editor '41; Carnival '41; May Festival '41; Junior Play '40.



**Katherine Lovar**

Her brains are not measured by her height.—Phys. Ed. '38, '39; May Festival '38; Carnival Queen Attendant '41; Glee Club '38, '39, '40, '41; Mixed Chorus '38, '39, '40, '41; String Quartet '39, '40, '41; Cello Solo '39, '40, '41; Band '40, '41; Orchestra '38, '39, '40, '41; Girls Quartet '39, '40, '41; Mixed Quartet '40, '41; Beta Club '40, '41; Willamizzou Staff '41; Red and White Recorder Staff, '40; Senior Carnival; Drum Corps '38, '39, '40, '41; May Festival '41.



**Edith Moore**

The moon came up and the stars came out as she walked by.—Glee Club '38, '39, '41; Mixed Chorus '38, '39, '41; SCA Play '41; May Festival Attendant '38; Willamizzou Staff '41.



**Robert Usrey**

I regret that I have but one school to leave.—Football '38, '39, '40, '41; Basketball '38, '39, '40, '41; Track '41; Tennis '39, '40, '41; Music '40; Junior Play '40; Glee Club '40; Willamizzou '41; May Festival '41; Senior Carnival '41.



## The 1941 Willamizzou



### Betty Light

The lass of the class, and O, the class of the lass.—Soprano Solo '40, '41; Girls Quartet '38, '39, '40, '41; Girls Trio '39, '40, '41; Glee Club '38, '39, '40, '41; Mixed Chorus '38, '39, '40, '41; Viola Solo '39, '40; Carnival Queen Attendant '39; Band '38, '39, '40, '41; Orchestra '38, '39, '40, '41; String Quartet '39, '40, '41; Brass Quartet '40, '41; Mixed Quartet '38, '39, '40, '41; Girls Octette '39; School Play '41; SCA Play '41; May Festival '38, '41; Drum Corps '38, '39, '40, '41; Phys. Ed. '38; Cheer Leader '41.

### Rhea Anne Rush

Did you ever see a dream jitterbugging? —Music '38, '39; Glee Club '38, '39, '40, '41; Mixed Chorus '38, '39, '40, '41; Girls Trio '40, '41; School Play '41; Willamizzou Staff '41; Beta Club '40, '41; Class President '39; Drum Corps '38, '39, '40, '41; Class Treasurer '40; Octette '39; Senior Carnival '41.



### Maxine Lovan

I'm trying my best to act like a senior. —May Festival '38; Phys. Ed. '38; Mixed Chorus '39, '40, '41; Glee Club '39, '40, '41; May Festival '41; Senior Carnival; Music '39, '40; Drum Corps '38, '39, '40, '41.

### Laura Coleman

Blessings on him who first invented sleep.



### Betty Jane Lilly

"Miss Personality".—Phys. Ed. '38, '39; May Festival '38.

### Eddie Williams, Jr.

None but himself can be his pallel.—Music '40; Glee Club '39, '40, '41; May Festival '41; Senior Carnival '41; Band '39; Mixed Chorus '40, '41; Tennis '39, '40, '41.



### Lowell McMurfrey

Too bad, girls, he's already attached.—Red and White Recorder '41; Senior Carnival '41.

### Eric Ferguson

Her only fault is that she has none.—Teacher Training; '39, '41; Music '39.



The 1941 Willamizcu



**George Johnson**

'40, '41; President of Brewington Boosters '41; Track '41.

**Lola Mae Rader**

Well, that makes 14 mistakes and nine errors doesn't it?—Phys. Ed. '38, '39, '41; Music '41; May Festival '38, '39, '41.

**Martha Jo Stoll**

A coronet of dark brown tresses make School has made me what I am.—FFA

**Clarabelle Gardner**

Every man for himself.—Teacher Training '40, '41; Music '38, '39.

**Marie Sells**

She is so shy and sweet.—

**Myrtle Coady**

No one's enemy, everybody's friend.—Phys. Ed. '38, '41; May Festival '38, '41; Music '38; Essay Contest '40; Teacher Training '40, '41.

**Mary Lou Morse**

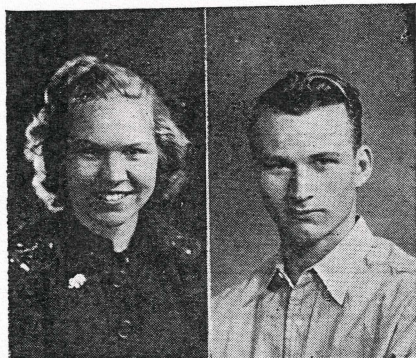
Her hair isn't exactly raven but we like it.—Phys. Ed. '38, '39; Senior Carnival '41.

**Charles Greenc**

I was not always a man of wooling.—



## The 1941 Willamizzou



**Ruth Ward**

A blond that's not so dumb.—Class President '41; Red and White Recorder Staff '41; Willamizzou Staff '41; Volleyball Team '41; Junior Play '40; Debate '40; Poetry Reading '40; Beta Club '40, '41; May Festival '38; Senior Carnival '41.

**Joe Carr**

I came among you as a stranger and . . .



**Beth Ferguson**

We would like to know her secret of making and keeping friends.—Teacher Training '39, '41; Music '39.

**Helen Bever**

Children are not responsible.—Jr. Play, '40; Music '38, '41; Glee Club '39; Orchestra '39, '40, '41; Mixed Chorus '39; Phys. Ed. '41.



**Warren Corn**

I came, I saw, and here I am.—FFA Vice-President '41; FFA Entertainment '39; FFA '38, '39, '40, '41.

**Florence Collins**

To a lady lost in a man's world.—Essay '40; Jr. Play; Beta Club '40, '41; Teacher Training '40, '41; Teacher Training President '41.



**Elsie Spence**

Fashioned so slenderly young and so fair.—Teacher Training '40, '41; Music '38, '39.

**John James**

Let the rest of the world go by.—Band '33, '39, '40; Orchestra '38, '39, '40.



## The 1941 Willam'izzou



**Weldon Goodwin**

Why be in a hurry?—Football '39, '40, '41; Track '39, '40, '41; FFA '38, '39, '40, '41.



**Lovene Skaggs**

We can only be thankful we were privileged to be in her class four years.—Mixed Chorus '38, '39; Glee Club '38, '39; Music '38, '39.



**Norma Vandeventer**

Always spic and span and neat, a nicer girl you would never meet.—Music '40; Glee Club '40; Mav Queen Attendant '41.



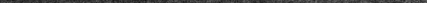
**Velma Ficke**

Her tongue runs on a pivot.—Glee Club '40, '41; Mixed Chorus '40, '41; Orchestra '39, '40, '41; Music '38, '39.



**Betty Hanson**

I have loved. Whom have I not loved?—Flute Solo '39, '40, '41; Band '39, '40, '41; Glee Club '39, '40; Orchestra '39, '40, '41; Mixed Chorus '39, '40; Debate '40; Music '38, '39; Drum Corps '39, '40.



**Aliene Gulley**

Sure, and she's a wee bit of Irish, I'll be thinkin'.—Phys. Ed. '38.



**Marjorie Schleming**

Even to her laugh she is original.—Teacher Training '40; Phys. Ed. '38.

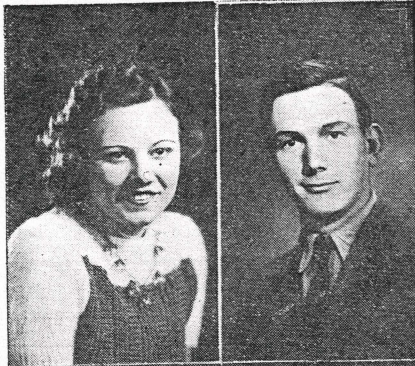


**Thelma Garlett**

Dark eyes and dark hair which require great care.—Teacher Training '40, '41; Phys. Ed. '41.



## The 1941 Willamizzou



**Clarabelle Marden**

I don't know who founded the school but I'm dumbfounded.—Music '38, '39.



**Phillip Wyrick**

Don't worry me about women.—Baseball '38, '39; FFA '37.



**Pauline Frazee**

Certified, guaranteed the finest.—Phys. Ed. '38, '39; May Festival '38; Violin Solo '40, '41; Band '38, '39, '40, '41; Orchestra '38, '39, '40, '41; Beta Club '40, '41; String Quartet '40, '41; Music '40; Drum Corps '38, '39, '40, '41.



**Donna Hurst**

Love, love, look what it has done to me.—Phys. Ed. '38; May Festival '38; Glee Club '40; Music '39, '40; Mixed Chorus '40; Red and White Recorder '41; Student Council '41; Jr. Play; Senior Carnival; School Play '41; Drum Corps '38, '39.



**Eldon Norman**

Football now and then, studies once in awhile, girls forever.—Glee Club '38 '39, '40, '41; Band '38, '39, '40, '41; Orchestra '38, '39, '40, '41; Snare Drum Solo '41; Mixed Chorus '38, '39, '40, '41; Baritone Solo '41; Football '38, '39, '41; Track '41; May Festival '41; Editor of school paper '40; Mixed Quartet '41; Student Council '41; Junior Play '40; Oration '40; Boys Quartet '40, '41.

**Ruth Sigman**

We hate to see her go.—Music '39.

**Cleva Baker**

Her delightful smile will long be remembered.

**Elizabeth Frazee**

Her air, her manner, all saw—admired. Phys. Ed. '38, '39; May Festival '38; Piano Solo '40; Band '38, '39, '40, '41; Orchestra '38, '39, '40, '41; Drum Corps '38, '39, '40, '41.



## The 1941 Willamizzou



**Sidney Williamson**

Work fascinates me, I could sit and look at it all day.—Football '40, '41; FFA '38, '39, '40, '41; Track '41; Baseball '41.



**Ruby Lea Montgomery**

Let's see, Miss Masnor, we could practice—Phys. Ed. '38; May Festival '38, '41; Girls Quartet '39, '40, '41; Girls Trio '40, '41; Alto Solo '41; Mixed Chorus '39, '40, '41; Glee Club '39, '40, '41; SCA Poetry Reading '40, '41; Microphone Speaking '40; Girls Octette '39; Junior Play '40; Red and White Recorder '41; Willamizzou '41; Senior Carnival '41; Student Council '41.



**Mattie Pearl Garlett**

I don't care, do you?—Music '38, '40.



**Jane Donley**

Let's work together; you do the work.—Phys. Ed. '38, '39, '41; May Festival '38, '41; Jr. Play; School Play '41; Willamizzou '41.



**Delores Marden**

Who will invent a brake for her tongue.—Glee Club '38, '39; Music '38; Phys. Ed. '41; Orchestra '38, '39, '40, '41; String Quartet '40, '41; Carnival '41; Teacher Training '40, '41; Vice President Teacher Training '41; Willamizzou Staff '41; May Festival '41.

**Mildred Rango**

You think of it, I'm tired.—

**Arlere Castle**

Men are such bores!—Phys. Ed. '38, '39, '41; May Festival '38, '41; Music '38.

**Everett Graves**

All I know is all I want to know.—



## The 1941 Willamizzou



### Jeweldeen Skarog

Losing two of them at the same time. This is too much.—Class President '40; Carnival Queen Attendant '40; May Day Attendant '38; Willamizzou Staff '41; Red and White Recorder Staff '40; Music '38, '39; Glee Club '38, '39; Mixed Chorus '38, '39.

### Cene Clingan

All the world likes an athlete—Class President '37; Vice President '39, '40; Mixed Chorus '40, '41; Mixed Quartet '40; Boxing '37; Track '39; FFA President '39; State Farmer '39; Toastmaster FFB '39; Judging Teams '40, '41; Welcome Jr.—Sr. Banquet; Sadie Hawkins Day '40; Willamizzou Editor '41; Chairman Student Council '41; SCA Orator FFA '41; Glee Club '40, '41; Football '37, '38, '39, '40; Basketball '39, '41; Prince Charming '41; Junior Play '40; School Play '41.

### Virginia Bergman

Hold the fort for I'm a'coming.—Phys. Ed. '38, '39, '41; May Festival '38, '41; Volleyball '41.

### Novella McCart

Has delightful ways.—Teacher Training '40, '41.

### Janie Strome

All her faults are good.—Music '38, '41; Phys. Ed. '38, '41; May Festival '38.

### Pauline Hunter

Fair as the daisy in the spring.—Pep Club '41; May Festival '38, '41; Phys. Ed. '38, '39, '41.

### Mary Ella Bever

Did I see red hair, sweetness and charm?—Music '38; Glee Club '39; Mixed Chorus '39.

### Robert Scantlon

Mildest of all men.—



## The 1941 Willamizzou

---



**Mildred Garlett**

All that I can say is that we'll miss her.  
—Teacher Training '40, '41; Phys. Ed.  
'41; Music '38, '40.

**Ora Richter**

She possesses one virtue which is rare  
among women, silence.—



**Basil Hedrick**

No care beyond today.—Football '38,  
'39, '40, '41; Track '39, '40, '41; Junior  
Play '40; Judging Tteam '40, '41; Mixed  
Chorus '40; Music '40; Glee Club '40.



## JUNIOR CLASS



Lyle James  
President

Bob Schneider  
Vice-President

Ralph Swecker  
Secretary-Treasurer

The Junior class has been very successful this year in presenting a play. The play, under the direction of Mr. Denney, was given in the new gymnasium. The name of the play was "Don't Darken My Door", and was highly successful. The cast was made up of a group of very talented students.

The Junior-Senior banquet was held at the American Legion home May 6, 1941, and a large group attended.

The class sold candy, soft drinks, hot dogs and gum at the football games and made a nice profit which went into the class treasury.

The Junior class wishes to take this opportunity to thank all the teachers for their hearty cooperation and support in all that was undertaken by the class.



## SOPHOMORE CLASS



Patsy Frost  
President

Floyd Lasley  
Vice-President

Johnie Cecil Stone  
Secretary-Treasurer

Huldah Lou Cromwell  
Reporter

Bill Brumley  
Mascot

The Sophomore class of '40 and '41 has been well represented in every event of the past year.

In the sports field our class was well represented in Football, Basketball and Track by Derrell Stringer. Two of the cheer leaders, Gwendolyn Wilbanks and Johnie Cecil Stone, were from our class.

In music we were represented by Freda Corn, Rowe Findley, Johnie Cecil Stone and the sophomores made up a good part of the mixed chorus and glee clubs.

Louella Strome from our class was Queen of the May Festival and Frances Lawing and John Clinton Hinds were sophomore attendants.

Floyd Lasley and Alma Jean Godat took part in debate.

Rowe Findley and Alma Jean Godat represented the class in the Beta Club.

Gwendolyn Wilbanks was captain of the volley ball team and Lucille Sherril was a member of the team.

We are all proud of our class this year and hope we will do as good a job when we make up the Willow Springs Junior Class.



## FRESHMAN CLASS



"Freshies"—Yes, that is what we are and proud of it, believe it or not.

Nine years ago we were happy to start on our career of learning with Miss Lottie Slusser as our teacher. In succession we had Miss Martin, Mrs. Zulauf, Miss Lillian Miers, Miss Mary Beth Slusser, Mrs. Sibyl Yocum Hart, Miss Clough, Miss Richman, Mrs. Hooper, Mrs. Myrtle Wilhoit Dunivan and Mr. Atkinson.

As a class we believe ourselves equal in desirability to all former freshman classes. We have one of our members in the Beta Club and some outstanding in music and athletics. We are looking forward to our sophomore year, as we hope and expect to add more honors to our credit.



## SADIE HAWKINS

On Friday, Nov. 1, 1940, Sadie Hawkins Day was ushered into the busy life of the Willow Springs High School.

Girls dressed as Daisy Mae, Pansy or the Leapin' McGulps, while handsome young men imitated Li'l Abner, Marryin' Sam or Hairless Joe.

The climax of the day came when Li'l Abners and Daisy Maes were admitted to an exciting romantic picture starring Bing Crosby—two for five cents. Then, after the show, "a typical scene in Dogpatch on Sadie Hawkins Day" was enacted by very capable students.

The affair was a tremendous success and it was decided to make it an annual occurrence.



BOOK III

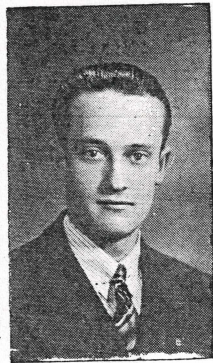
**DEPARTMENTS**







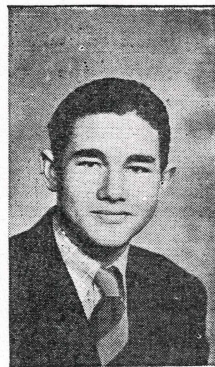
## VOCATIONAL AGRICULTURE



Warren Corn  
1st Vice-President



Claude Ferguson  
President



Keith Peterson  
2nd Vice-President

The vocational agriculture class has had a good year both from the financial viewpoint and enrollment. There were 78 boys enrolled this year with a project income of \$3,017.44.

The chapter purchased a popcorn machine in the fall and sold popcorn, peanuts, candy and pop at the football and basketball games. The chapter also has a baby beef project, which will be shown in Springfield, and a sheep project.

Our chapter won first place in the judging contest held here April 11.

The third annual Father-Son banquet was held May 12. We entertained the Home Economics girls January 16, and the first annual barn-warming was held March 27, with great success.

Eugene Clingan won first place in the SCA public speaking contest at Cabool and represented this district at Springfield.

Four teams were entered in the judging contest at Columbia and they won first place in the dairy subject matter contest. We have two State Farmers this year, Francis Pfister and Keith Peterson.

The Willow Springs chapter took 65 ribbons and \$33.00 in prize money at the West Plains Fair, and 23 ribbons at the Ava Parish Show.

We consider this one of the most successful years the class has ever had.



## VOCATIONAL HOME ECONOMICS

1940-41 is the second year of Vocational Home Economics. Since the enrollment this year was more than double that of last year, the course was changed to include two classes in Home Economics I and one in Home Economics II with Home Economics III to be offered next year.

A bus load of girls attended the District Rally at Thayer this year. Betty Light was the pep song leader for the program and Naomi Honeycutt was toastmistress at the luncheon.

The first year Home Economics class exhibited the aprons and pot holders they had made for later use in the foods unit, in Hammer's Store window, at their invitation.

During the Thanksgiving vacation the Home Economics II class exhibited some very beautiful and useful articles they had made in House Furnishings unit in Harry's Variety window. The articles showed economy and ingenuity in the use of dyes, crayolas, etc. They included luncheon sets, tie-dyed, fiesta-dyed, done in crayon work or embroidery. They were made of feed sacks, sugar sacks, and new muslin. There were also chair sets and sofa pillows made of burlap and gunny sacks, plain and dyed; a burlap table runner stenciled with oil paints, a foot stool made of tin cans and covered with strips of five-strand braided rags.

At Christmas the girls made Christmas cookies and candies and filled sacks to take home to their smaller brothers or sisters. Many vases were made from odd shaped glass jars marbled with oil paints.

In addition to planning and serving the meal unit each class enjoyed serving one or more luncheons to the Board of Education.

Many useful home projects were completed—such as redecorating a girl's room, preparing, planning and serving breakfasts or suppers for a week, recovering furniture, rearranging furniture, making a garment, making over something old, making what-nots, etc.

Near the end of school we plan to have an exhibit showing our garments we have made. We will invite our mothers, teachers and other friends who will be entertained at tea. We will also entertain the F. F. A. boys in return for the good time they showed us.



## COMMERCE

Our commercial course consists of four units—One unit typing, shorthand, bookkeeping and one unit of General Business.

These courses prepare a person so that he will be able to handle his own affairs in a more efficient way and at the same time enables him to know enough about the business world to take a job and hold it.

We are especially proud of our twenty-two Woodstock typewriters which are never more than three years old.

There is an enrollment of 170.



## TEACHER TRAINING

The Teacher Training class of 1940-41 has proved very successful in their work the past year. This class of seniors has done some fine work in Organization and Management, Methods, Advanced Arithmetic, and General Agriculture with the help of our teacher, Miss Clough.

Some of our work has taken us to nearby communities to do observation and practice teaching. Many helpful things were learned through the fine cooperation of the teachers. A good many periods were spent observing and teaching in the elementary school of Willow Springs where the teachers have been most helpful and co-operative.

The Teacher Training Club has had several parties. Four new members have been taken into the club this year.

The class of 1941 gives the future Teacher Training students a hearty welcome to their new task and wish them as many pleasant hours of work and enjoyment as we have had.



## LITERARY



Five units are offered by the English department. They include English I, II, III, IV, and speech arts.

Willow Springs students participated in a varied program of literary activities. The first important event was the play, "The Absent-Minded Professor." The play, performed penthouse style, was a success.

In debate several people worked on the subject of "Increased Federal Power". Alma Jean Godat and Floyd Lasley took part in tournaments at Cabool, West Plains and Bolivar.

In the literary meet at Cabool, Willow Springs made a very good showing. Doris Nelson was ranked 1 in essay. Those getting a superior ranking were Naomi Honeycutt in essay; Gene Clingan, oratory and extemporaneous speaking; Ruby Lea Montgomery, poetry reading; and the one-act play, "Not Quite Such a Goose". The play cast included Rex Pace, Maxine Williams, Edith Moore, Betty Light and Gene Clingan. The play also won a superior grade at the Springfield Teachers College district meet. At the district speech meet Ruby Lea Montgomery won first in poetry reading and was certified to go to the contest at Columbia, May 3. At Columbia she obtained a superior ranking and second place.

Wayne Spence was granted the right to represent Howell county in the American Legion oratory contest at Forsyth.



## The 1941 Willamizzou

---

### MUSIC

The music department under the supervision of William Shelton has done very well this year.

At the Ozark Music Festival in Willow Springs March 22, entries were given a numerical rating at the same time they were being judged for the sub-district meet. Individual and group numbers awarded a No. 1 rating in the sub-district division were eligible to compete in the district music meet in Springfield April 12.

Our entries and ratings were: No. 1 ratings—Mary Sass, drum majoring; Betty Light, soprano; Ruby Lea Montgomery, alto; Wayne Spence, bass; Betty Hanson, flute; Dayne Copeland, baritone; mixed quartet, girls quartet, girls glee club, boys glee club, mixed chorus, and since there was no No. 1 rating given in trumpet for the Springfield contest, Rowe Findley, making the only 2 rating, was eligible for that meet. No. 2 ratings were: Johnie Cecil Stone, tenor; Pauline Frazee, violin; Katherine Lovan, cello; Rowe Findley, trumpet; Eldon Norman, baritone; Wayne Spence, trombone; orchestra, band, girls trio, boys quartet, string quartet, clarinet quartet, clarinet trio. No. 3 ratings were Donald Phillips, cornet; Rex Pace, tuba; brass quartet. No. 4 rating was Frede Mae Corn, clarinet.

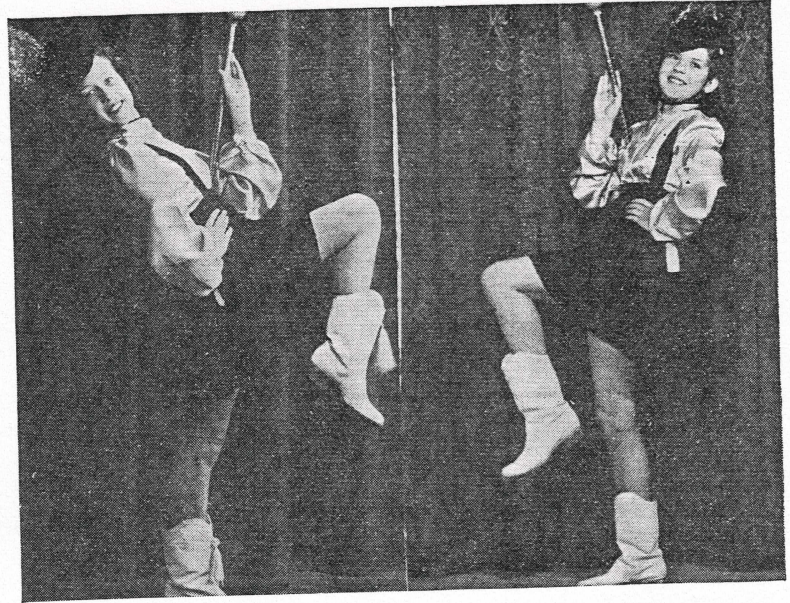
In competition with eight schools at the annual S. C. A. Music Festival Saturday, April 5, we received 3 excellent ratings, 7 superior ratings, 12 good and 1 average rating.

At the district meet in Springfield we received the following: Mixed chorus 1; girls quartet 1; mixed quartet 1; girls glee club 1; Betty Light, soprano, 1; Ruby Lea Montgomery, alto, 1; Wayne Spence, bass, 2; Wayne Spence, trombone, 2; boys glee club 2; Rowe Findley, trumpet, 2; Betty Hansen, flute, 3; Dayne Copeland, baritone, 2.

At the state meeting in Columbia these ratings were made: Mixed quartet 2; mixed chorus 2; Ruby Lea Montgomery, alto 2; girls quartet 3; Betty Light, soprano, 3.



## TWIRLERS



Wilma Towers

Donna Sue Anderson

## DRUM AND BUGLE CORPS





DRUM MAJOR



Mary Sass



## MIXED CHORUS



Madge Bennett  
Jean Bennett  
Jean Brewington  
Myrtle Barker  
Edith Bottom  
Huldah Lou Cromwell  
Freda Mae Corn  
Yvonne Clute  
Nellie Mae Doughty  
Wilma DeVore  
Velma Ficke  
Evelyn Fechter  
Stella Goodwin  
Maxine Lovan  
Betty Light  
Sybil Lovan  
Mary Lyons  
Katherine Lovan  
Ruth McClellan

Edith Moore  
Ruby Lea Montgomery  
Mary Lawrence O'Kelley  
June Peters  
Minnie Lou Rader  
Virginia Reeve  
Betty Jo Revard  
Rhea Anne Rush  
Dorothy Robertson  
Louelle Strome  
LaNell Sparks  
Margaret Ulrich  
Maxine Williams  
Mary Sass  
Harold Brady  
Donald Brower  
Gene Clingan  
Dayne Copeland  
Chester Click

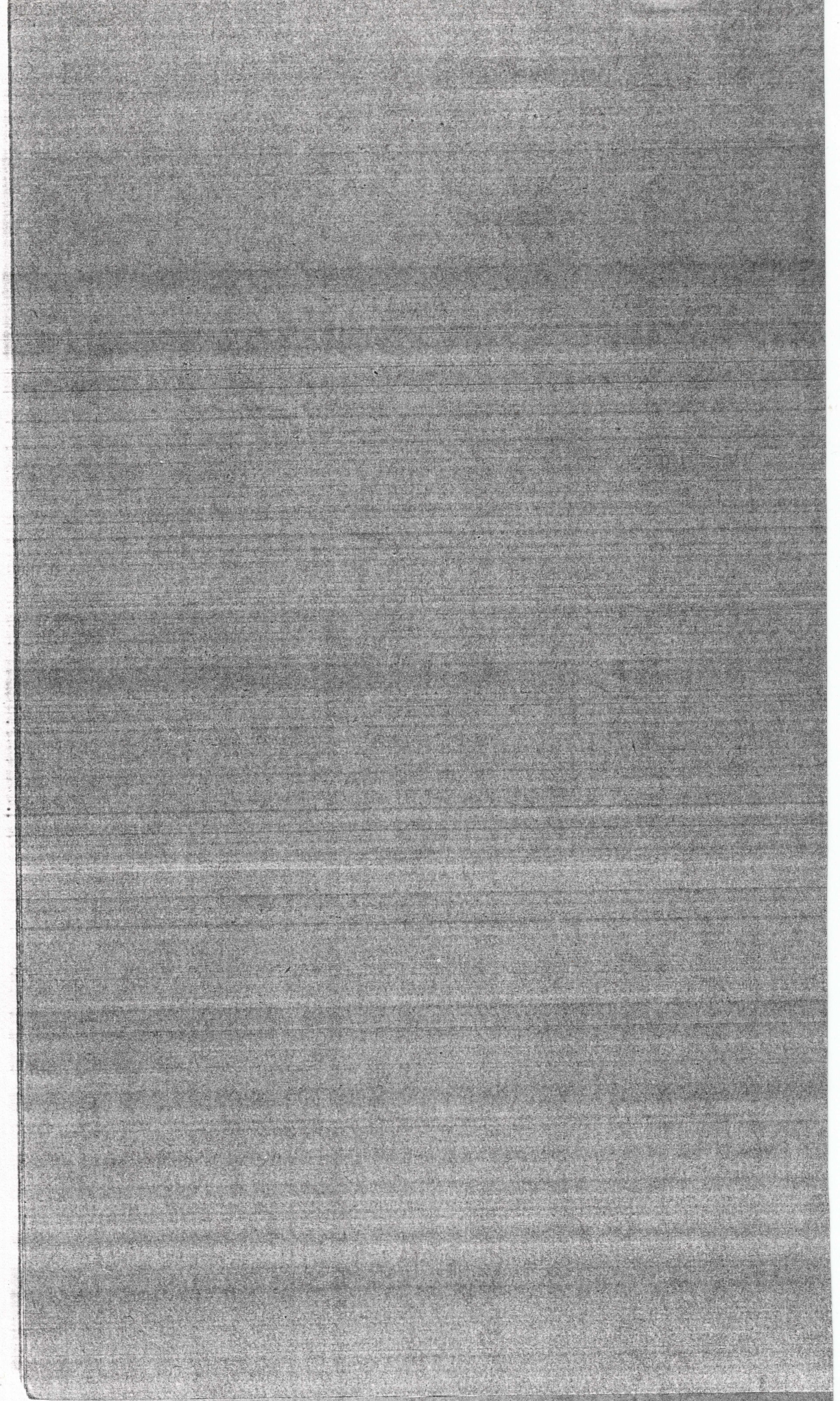
Rowe Findley  
Robert Gauldin  
Lyle James  
Eldon Norman  
Donald Phillips  
A. C. Reynolds  
Johnie Cecil Stone  
Glen Spence  
Eddie Williams, Jr.  
Maxine Goodman  
Naomi Honeycutt  
Rex Pace  
Wanda Hays  
Fern Roberts  
Francis Pfister  
Bill Brumley  
Bill Hankins  
Wayne Spence  
Helen Ruth Farrar



BOOK IV

**ATHLETICS**







## SPORTS CALENDAR

### SEPTEMBER

- Sept. 2—Once again we trudge through the open door of old WSHS with our new tablets under our arms and smiles (some people would call them "monkeyfied" grins) on our faces.
- Sept. 3—Seniors inspect "Freshies" and are positive that they couldn't have been **that dumb** four years ago.
- Sept. 4—Thirty-two boys report for football practice. And among them are two newcomers—Tiny Robin and Eldon. Mm-mm-mm! The girls can see that this will be a very interesting football season.
- Sept. 17—Miss Masnor begins to wonder if the bookkeeping students can say anything else but "Why"?
- Sept. 19—Snake Dance. Boys! If you want a wife who can build fires, just look a few of those girls up who built the fire for the snake dance.
- Sept. 20—Football team plays Mtn. Grove on the home field and we beat 'em!
- Sept. 25—Professor Grimes decides he **must** try his jokes out on the Freshmen. Of course—four years from now they won't be so funny to them.
- Sept. 27—Football team plays West Plains here.

### OCTOBER

- Oct. 5—Football team plays at Cabool.
- Oct. 10—FFA officers attend district meeting at Cabool.
- Oct. 11—Bears defeat Thayer Bobcats with a 7-0 victory!
- Oct. 14—Donna and Noble's "secret hitching" is announced in **Red and White Recorder**.
- Oct. 15—Teachers Training Party—Everyone reported a good time.
- Oct. 16, 17, 18, 19—Southwest Missouri District Teachers Meeting brings a much welcomed vacation (to both students and teachers).
- Oct. 21—They always say that October is the month for people to fall **out** of love and after taking a look around the campus, and seeing all the lone wolves, we believe it.
- Oct. 24—The presidential campaign is raging through the halls. And who knows! From these debaters may come our future politicians. But they'll have to learn more about it than they know now.
- Oct. 25—Greenwood High plays Bears.
- Oct. 29—School play, "The Absent Minded Professor," goes over with a bang—due to the efforts of Mr. Denney and the "shaking" cast.

### NOVEMBER

- Nov. 1—Bears trample Cabool Bulldogs here.
- Nov. 1—Sadie Hawkins Day—And a real, honest-to-goodness foot-race (Dogpatch Style).
- Nov. 2—Home Economics girls go to Home Project Rally at Thayer.
- Nov. 2—Speech Class students attend Missouri Speech Association at Springfield.
- Nov. 3—We begin to notice that these "sparkers" are really going strong "around the campus."
- Nov. 4—Football team plays at Thayer.
- Nov. 5—Election Day! And a Student Presidential Election is conducted for the h'istory students.
- Nov. 10—FFA boys attend American Royal stock show in Kansas City and report it to be one of the most interesting shows ever attended.
- Nov. 11—Claude Ferguson unanimously elected editor of Willamizzou.
- Nov. 12—Annual Senior Carnival is a big success.
- Nov. 15—Football game at Mtn. Grove.
- Nov. 18—School matinee—"Tom Brown's School Days".
- Nov. 19—Seniors discuss varicous colors for caps and gowns, breaking the age-old tradition of gray gowns.
- Nov. 20—Thanksgiving vacation begins.



## The 1941 Willamizzou

---

- Nov. 21—Thanksgiving game at West Plains.  
Nov. 25—Students return from vacation with woeful faces at the prospect of eating warmed-up turkey, turkey sandwiches, and turkey hash for the next two weeks.  
Nov. 26—The Juniors begin dreaming about how nice it will be to wander around by themselves next year. But take warnin', chillun'! It ain't all peaches and cream! For instance take Ruby Lea! She has lost her Latin book at least four times this year.  
Nov. 31—Drum Corps goes to West Plains to march in Santa Claus parade. (And comes home with swollen feet and indigestion from too many hamburgers.)

### DECEMBER

- Dec. 6—Annual District meeting of FFA at Mtn. Grove.  
Dec. 12—Open House Day. Our Mamas and Papas take our places for a day.  
Dec. 13—Basketball team plays at Ava.  
Dec. 16—Another WSHS couple married; Hazel Ratliff and Paul Fisher! Tut! Tut! It's getting to be a habit!  
Dec. 16—The Latin II class is getting discouraged (what with verbs and such that don't make a bit of sense).  
Dec. 17—Basketball team plays at Mtn. Grove.  
Dec. 18—Christmas musical program.  
Dec. 20—Dedicated new gymnasium at basketball game with West Plains.  
Dec. 20—Christmas vacation begins.  
Dec. 25—A Merry Xmas to all.  
Dec. 27—Alumni Banquet—and guess what! The Girl's Quartet learned a new song! Yeah—honest!  
Dec. 30—Vacation is over and there are tests and tests and more tests staring us in the face.

### JANUARY

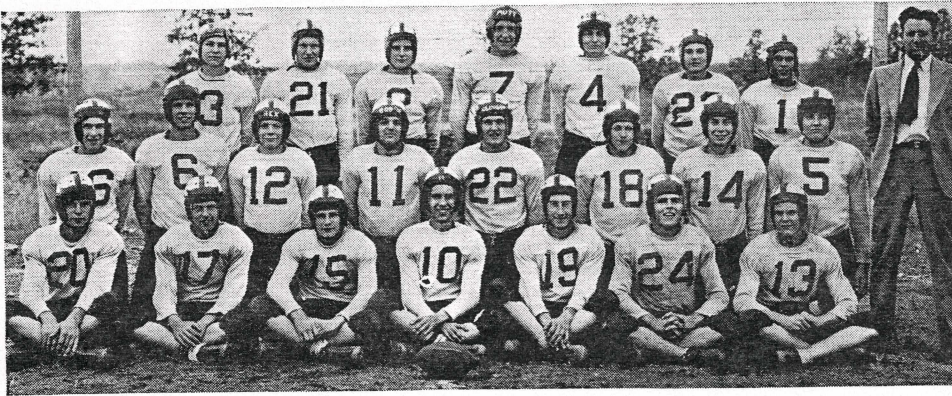
- Jan. 1—A few of the "Men About Town" of the Senior class don't show up. Couldn't be that they're sleepy after New Year's Eve, could it?  
Jan. 2—FFA boys move into new agriculture building.  
Jan. 3—Bears play basketball at Licking.  
Jan. 10—Game to be played here with Mtn. Grove is postponed.  
Jan. 14—Basketball team plays at Cabool.  
Jan. 15—Miss Greene is now convinced that Senior girls just can't keep quiet—at least not in Home Ec.  
Jan. 16—FFA boys entertain Home Ec. girls with a party. A swell time!  
Jan. 17—Basketball team plays West Plains.  
Jan. 20—We find that we have some accomplished boxers in the halls before school and at noon.  
Jan. 21—Summersville plays Bears here.  
Jan. 24—Bears battle it out with Mtn. Grove.  
Jan. 24—Achievement Tests—Headaches, and more headaches.  
Jan. 28—New Beta Club members elected.  
Jan. 28—Staff of annual yearbook selected.  
Jan. 28—Parent-Teacher Association has Jitney Supper.  
Jan. 30 & 31—Beginning of South Central Association Basketball Tournament! Some of the girls are caught wishing that Leap Year hadn't ended last month.

### FEBRUARY

- Feb. 1—Tournament ends.  
Feb. 3—Basketball team plays Seymour here.  
Feb. 4—Novelty show presented by Miss Vance.  
Feb. 7—Teachers Training girls finish their practice teaching.  
Feb. 7—Basketball team plays at Houston.  
Feb. 10—What the commercial department ever did to the school that they should put the music department right below them, I don't know! What tortures!  
Feb. 11—Basketball team plays at Summersville.  
Feb. 13—Monthly meeting of FFA.  
Feb. 14—A swell time was had at Teachers Training Valentine Party.  
Feb. 14—Bears play Houston here.



## FOOTBALL



Sept. 20—Bears defeated the Mountain Grove Panthers 13 to 12. Although having the lightest team in the SCA, the Bears took care of the Ozark Bowl champs. A good start.

Sept. 27—Bears defeated by West Plains 25 to 0. Bob Schneider, fleet-footed ball carrier and Gene Clingan, triple-threat quarterback, were both injured at the start of the game. Tough luck but we'll meet again!

Oct. 4—Second defeat for Bears at the hands of Cabool Bulldogs 14 to 0. Injuries kept two regular backs out of game while several players were limping about. Many subs saw service.

Oct. 11—After two losses the Bears defeated the Thayer Bobcats 7 to 0. With the famous old Statue of Liberty play Eldon Norman crossed the pay stripe. Clingan returned to active service.

Oct. 25—The undefeated Springfield Bluejays added another win to their record at the expense of the Bears 13 to 7. Bob Schneider returned to the squad and did a good job too.

Nov. 1—The Bears avenged the previous defeat by smashing the Cabool team into a 13 to 0 pulp. It was the second game that saw all the Bears in good condition. The Bears passing, blocking, tackling was almost perfect.

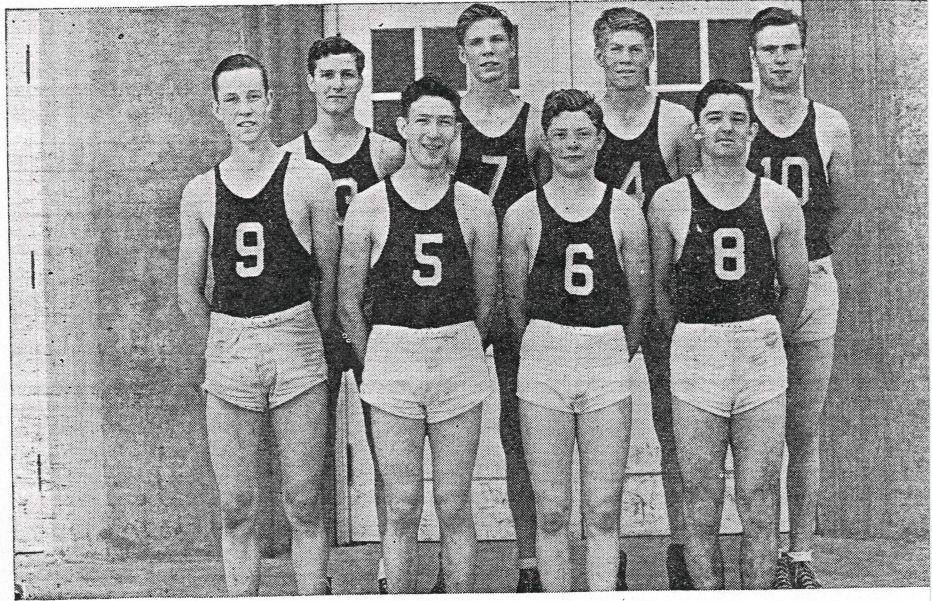
Nov. 4—In a very thrilling game the Bears defeated Thayer in the last quarter 7 to 6. Clingan kicked the winning point. Now we are tied with Mountain Grove for first place.

Nov. 15—The "same old story" at Mountain Grove. They won 15 to 0. It was the Bears' "off day".

Nov. 21—Bears lost the last game of the season to the West Plains Zizzers 27 to 13. Gene Clingan was injured and just did the passing. Bob Schneider, Hedrick and Norman did most of the ball carrying.



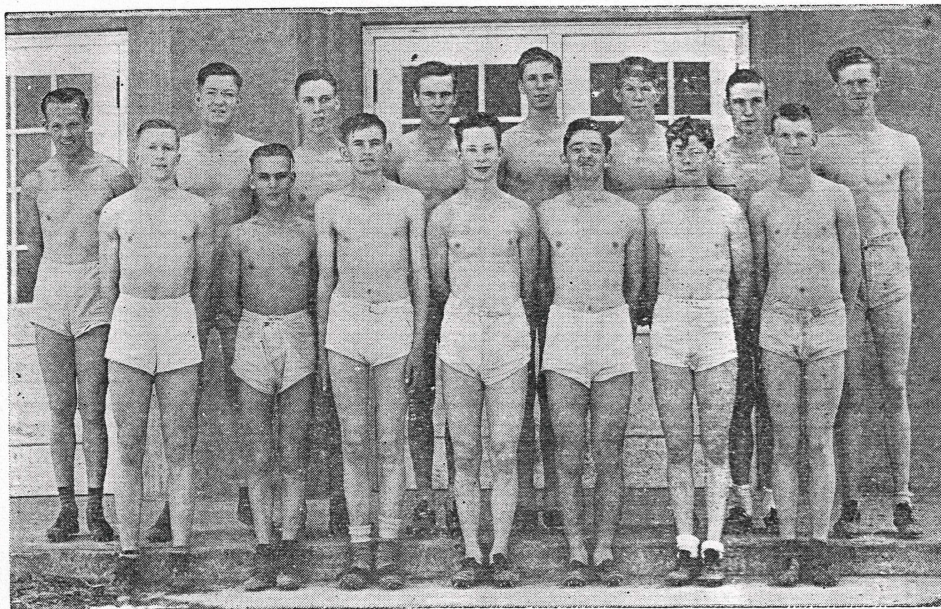
## BASKETBALL



- Dec. 17—Mountain Grove 37; Bears 19.  
Dec. 20—West Plains 13; Bears 14.  
Jan. 3—Licking 17; Bears 16.  
Jan. 17—West Plains 29; Bears 12.  
Jan. 21—Summersville 18, Bears 16.  
Jan. 24—Mountain View 16, Bears 20.  
Feb. 3—Seymour 19; Bears 23.  
Feb. 7—Houston 31; Bears 19.  
Feb. 11—Summersville 24; Bears 15.  
Feb. 14—Houston 24; Bears 10.  
Feb. 18—Cabool 24; Bears 16.  
Feb. 19—Licking 19; Bears 17.  
Feb. 24—Mountain Grove 24, Bears 15.  
Feb. 28—Mountain View 25; Bears 24.  
March 13, 14, 15—Annual Junior High Tournament.



## TRACK



Although only one man from last year's basketball team was left, the Bears made a showing that shall not be forgotten. The first team had five husky Bears, backed by plenty of reserves when the going was tough.

In every game the Bears gave every ounce of energy despite the fierce competition of this conference.

Coach Ted Munford and twenty-five cinder burners jogged out to the track this spring for a little practice in track and field events: running, pole vaulting, high jump, broad jump, shot put, discus and hurdles.

The first meet was with Thayer and West Plains at the last named school. The Bears showed promising results in this meet.

Then the team played host here at the annual invitation meet. The South Central Association meet at West Plains wound up the season for 1941.

Those out for track were:

Bud Doughty, Joe Carr, Harvey Hiler, Weldon Goodwin, Basil Hedrick, Bill Rothgeb, Wayne Foster, Bob Schneider, Darrell Stringer, Jewel Thompson, Ralph Swecker, Lyle James, Bob Perkins, Keith Peterson, Herbert Sass, Roy Stringer, Melvin Godsy, Paul E. Smith, Floyd Lasley, Donald Brower, Rex Pace, Earl Richter, Robert Gauldin, Donald Henry, Dayne Copeland.

Lettermen were: Darrell Stringer, Weldon Goodwin, Lyle James, Jewel Thompson, Bob Schneider, Ralph Swecker and Wayne Foster.



## GIRLS PHYSICAL EDUCATION

Willow Springs girls have really been on the sports map this school year.

The season started with Volleyball which was concluded after a very enjoyable day at the Cabool tournament.

Basketball came next, and the seniors produced the winning six.

We purchased two standard tumbling mats, and paid for one of them with proceeds from a program. The girls surprised even themselves with some very good stunts and pyramids.

Soft ball, table tennis, deck tennis, marching, folk dancing, archery and hiking were the other sports in which we participated.

The regulation class uniform for the year was white with red handkerchief and red socks. We are truly set for bigger and better things here in Physical Education.

The year closed with a May Day celebration put over by the entire school and under the direction of our ambitious and energetic instructor, Miss Wilma Vance.



BOOK V

**ACTIVITIES**







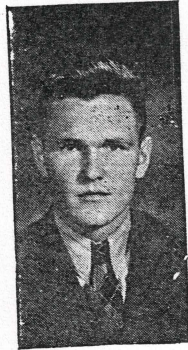
---

---

## WILLAMIZZOU STAFF



Katherine Lovan  
Activities



Gene Clingan  
Editor



Ruth Ward  
Advertising Manager

Assistant Editor .....	Florence Collins
Circulation Manager .....	Robert Usrey
Dept. Editor .....	Jeweldeen Skaggs
Sports .....	Bill Rothgeb
Music .....	Pauline Frazee
Calendar .....	Rhea Anne Rush
Senior Characterizations .....	Ruby Lea Montgomery
Humor and Drawings .....	Edith Moore
Vocational Agriculture .....	Keith Peterson

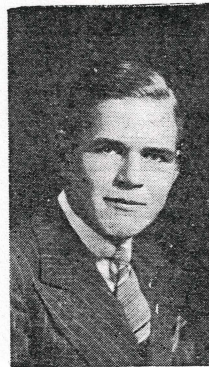
In behalf of this excellent staff, I wish to thank the faculty, the advertisers, and the students of the Willow Springs high school for their great cooperation which we have received in editing this book. We hope that this Willamizzou will lengthen the memories which you have gathered while attending this school.—Editor.



## RED AND WHITE RECORDER



Ruby Lea Montgomery  
Adv. Mgr.



Claude Ferguson  
Editor



Ruth Ward  
Typist

Assistant Editor .....	Lyle James
Assistant Editor .....	Alma Jean Godat
Business Manager .....	Gwendolyn Wilbanks
Advertising Manager .....	Ruby Lea Montgomery
Subscription Manager .....	Donna Hurst
Sports Editor .....	Johnie Cecil Stone
Department Editor .....	Lowell McMurtrey
Official Secretary .....	Ruth Ward
Reporters—	
FFA .....	Marvin Dickman
Sports .....	Jay Morse
Junior High .....	Floyd Lasley
Sophomore .....	Huldah Lou Cromwell
Freshman .....	Carnie Frank Stone
Junior .....	Maxine Williams

The above staff did their best to pilot the paper through its third year of publication! We hope we have satisfied our readers and advertisers to the greatest extent possible. We wish to express our whole-hearted appreciation for the cooperation of everyone concerned.

To the staff of next year—we wish the greatest success, and may you do all in your power to improve the paper in every way possible. Your work may be hard and your reward may be slow in coming but you will be amply rewarded according to the effort put forth.



## STUDENT COUNCIL



Eased upon democracy and with the thought of giving more experience to the students, the faculty has decided to let the student body select a group of students as their student council.

It was done in a very democratic way, with each home room selecting the pupil that they wanted. A home room is a group of students with one teacher as their counselor.

The council elected the following officers: President, Gene Clingan; and secretary, June Schneller.

The student council will in every way possible and every way within their power, try to help the faculty solve school problems—such as noisy halls, actions on the campus, care of the school library, newspapers, magazines. It will act under the faculty's supervision and if things get beyond their control they will ask the help of the faculty.

This council was formed to eliminate somewhat the teacher's continually telling the students not to do this or that and to lessen their responsibilities.

It is believed that with the student body backing the student council, any pupil who has been brought before the council for some wrong doing will not want to face the student council again because they now know what the student body thinks of what they have done and also know that student opinion carries throughout a well organized school.

Student opinion is powerful and therefore we have every right to assume that it will be worthy of our time and that the council will be a success.



## BETA CLUB



The National Beta Club is one of the clubs for honor students in high school. To be eligible for the Beta Club a student must have a certain number of E's.

Members of the Beta Club are as follows:

Florence Godat Collins  
June Schneller  
Ruth Ward  
Katherine Lovan  
Rhea Anne Rush  
Pauline Frazee  
Maxine Williams

Jay Morse  
Mary Louise Snyder  
Betty Lou Ferguson  
Martha Jean Brewington  
Vera Hull  
Rowe Finley



## The 1941 Willamizzou

---

### COMMENCEMENT

The commencement exercises for the class of '41 were held May 14 in the gymnasium. The following program was given:

Processional	
Welcome Address	Florence Godat Collins
Story, "David Swan"	Ruth Ward
"Till We Meet Again"	Girls Quartet
Class Will	June Schneller
Oration	Katherine Lovan
Reading, "Elizabeth the Queen"	Rhea Anne Rush
"The Londonderry Air"	Mixed Quartet
Farewell	Pauline Frazee
Presentation of diplomas	
Recessional	

Several musical numbers were given by the girls' quartet and the mixed quartet.



## HIGH SCHOOL PLAY

### "THE ABSENT-MINDED PROFESSOR"

Comedy in Three Acts

The literary department of the Willow Springs high school gave the play "The Absent-Minded Professor" on October 29.

Uncle Barney, Gene Clingan, is the main character. He has an ardent belief in astrology which leads him to make predictions according to stars. He is sometimes carried away with his work. Of course, we know that all professors are absent-minded and this one seems to be no exception.

Uncle Barney has two neices, Sharon and Joan, played by Donna Hurst and Rhea Anne Rush. They are young, sweet, innocent and attractive. They get their men, who are Joe Watson, Johnie Cecil Stone, and Dave Carter, Rex Pace. The boys are in college and obviously well educated, but appear to be slightly frivolous as they have just completed their freshman year.

Miss Melvins, Naomi Honey, is the family housekeeper and has cared for Sharon and Joan since their father's death. She is loved by the girls and despised by Aunt Jessica, Jane Donley, and Josephine, Betty Light. Aunt Jessica is Barney's sister-in-law and is very haughty and disdainful. She is what you might say the upper-crust in society. Josephine is her daughter, an exact image of her mother.

Miss Esmeralda is the village widow who has four times been deprived of a husband. She is very affectionate, boring Uncle Barney with her talk of her dead husbands. Esmeralda is played by Freda Graves. Mr. Butler is played by Floyd Lasley. He is the man who reads the will of the late Baxter T. Dawkins.

## JUNIOR PLAY

### "DON'T DARKEN MY DOOR"

The Junior class of the Willow Springs high school presented the play "Don't Darken My Door" by Anna C. Martens, on February 26, 1941.

The cast of characters were the following:

Roger Kent—a bachelor ..... Wayne Spence  
Rosemary Kent—his romantic niece ..... Maxine Williams  
Tom Garrick—Rosemary's suitor ..... Lyle James  
Poppy Foster—Maid-of-all-work ..... Fern Roberts  
Alec Stubbins—Poppy's devoted swain ..... Rex Pace  
Jane Perkins—a writer of romances ..... Naomi Honeycutt  
Louisa Featherstone, Susie Featherstone (maiden ladies) .....  
..... Erma Frommel, Helen Seiber

This comedy concerns the love of Rosemary and Tom. Rosemary has been reading the books of Jane Perkins, who decides her Tom has "no romance in his soul." Jane shows Tom and Alec how to get romance in their souls. Jane also manages a romance for herself, with Roger Kent, Rosemary's uncle. Louisa and Susie Featherstone are also captivated by Jane's stories. Poppy decides that perhaps Alec does have some "romance in his soul" after all.



## WILLAMIZZOU QUEEN



*Betty Jane Lilly*



## HALL OF FAME

### Music

Freda Wilfong  
Bob Gooch  
Lee Livingston  
Eugene Armstrong  
James Ferquson  
Juanita Hansen  
Leslie Fite  
Maxine Austin  
Mary Jewell Ellis  
Lillian Miers  
Lcuise Miers  
Louise Madaus  
Elwin Fite  
Roy Lovan  
Francis Ellis  
Sibyl Yocum  
Beulah Bolerjack  
William Benton  
Harold Williams  
Harry Lovan  
John Frommel  
Paul Harms  
Harry Williams  
Charles Prall  
Herbert Madaus  
Mary Beth Slusser  
Dorene Yocum  
Elda Green  
Howard Burchard  
Marjorie Protiva  
Mary Griffith  
Virginia Scruggs  
Geraldine Frommel  
Esther Campbell  
Ann Parsons  
Bill Ellis  
Tommy Austin  
Harold Koch  
Tolliver Squires  
Vivian Saville  
Harry Agnew  
Dwight Richards  
Bob Hansen  
Otto Harms  
Billie Light  
Edward Ogden  
Donald Cook  
Harlan Northway  
Roland Northway

Otto Holland  
Lloyd Blakely  
Jo Lovan  
CoraLee Burchard  
Herbert James  
Frances McPhail  
Mary Jane Cottrell  
Leland Boles  
Dolores Austin  
Ruby Lea Montgomery  
Katherine Lovan  
Rnea Anne Rush  
Betty Light

### Athletics

Bud Protiva  
Russell Ferguson  
Frank Protiva  
Herbert Smith  
Lee Livingston  
Edna Smith  
Murrell Brown  
Lyle White  
Ivan Smith  
Rowe Protiva  
Lester Jones  
Ralph McDill  
Francis Ellis  
Bowman Barr  
Dorothy Payne  
Harry Lovan  
Richard Bayless  
Sherman Stuart  
Mark Collins  
William Brooner  
Mary K. Smith  
Russell Stringer  
Harold Brooner  
Helen Wiley  
Tommy Austin  
Bill Ellis  
Bob Hansen  
Cecil Hedrick  
Russell Coleman  
Russell Mitchell  
Clifford Stringer  
Elliott Nelson  
Eugene Clingan  
Rudolph Walthers  
Robert Usrey

### Physical Education

Enid Castle  
Opal Ellis

### Scholarship

Ted Ferguson  
Lila Austin  
Naida Protiva  
Augusta Rush  
Quintella Chapin  
Eula Fern Protiva  
Carl Dudley  
Margaret Rothwell  
Vera Thomas  
Marjorie Protiva  
Mary Beth Slusser  
Zella B. Murray  
Helen Mitchell  
Franceline Lovan  
Eupha Cain  
CoraLee Burchard

### Vocational Agriculture

Walter Horak  
Fred Madden  
Doyle Sanders  
Herbert James  
Clarence Grogan  
Eugene Clingan

### Literary

Quintella Chapin  
Josephine Cottrell  
Faye Brooner  
Leona Tobias  
Eloise Clawson  
Ruby Lea Montgomery

### Citizenship

Oral Lewis Rosier  
Edmund Lovan  
Louise Ferguson  
Kenneth Fite  
Pearl Shotsman  
Lorene Ferguson  
Mary Jewell Ellis  
Lillian Miers  
Francis Ellis  
Harry Lovan  
Howard Burchard  
Don Abbott



## HALL OF FAME

Mary K. Smith  
Carlyle Brown  
Geraldine Frommel  
Sammie Lovan

### Typing

Edmund Lovan  
Robert Gooch  
Richard Morgan  
Faye Brandt  
Sybil Yocum  
Jo Ella Peters  
Catherine Farquharson  
Mary Ellis  
Mary Beth Slusser  
Dorene Yocum

Eida Green  
Howard Burchard  
Marjorie Protiva  
Mary Griffith  
Don Abbott  
Mary K. Smith  
Ethel Rothwell  
Martha Johnson  
Anne Ames  
Dessa Pennington  
Lucille Corman  
Betty Ruth Sass  
Leland Boles  
Lloyd Blakely  
CoraLee Burchard

Jo Lovan  
Frances McPhail  
Norma Lou Gunn  
Billy Fisk  
E. Ruth Ward

### Beta Club

Evelyn Ruth Armstrong  
Norma Lou Gunn  
E Ruth Ward  
Florence Godat Collins  
Pauline Frazee  
Katherine Lovan  
Rhea Ann Rush  
June Schneller

## ALUMNI BANQUET

The eleventh annual banquet of the Willow Springs High School Alumni Association was held December 27, 1940 at the American Legion Hall.

Elmer Sells acted as toastmaster and introduced the following program:

Toastmaster—Elmer Sells.

Invocation—J. E. Lovan.

Welcome—Thomas Austin.

Girls Quartet—Betty Light, Rhea Anne Rush, Katherine Lovan, Ruby Lea Montgomery.

Response—J. Carl Ferguson.

Vocal Solo—Ruby Lea Montgomery.

Introduction of Honor Roll Music Students—W. C. Grimes.

Forty-three were present with the class of '39 having the largest number present.

Following the banquet a short business session was held at which the following officers were elected:

President—Dorwin Martin.

First Vice President—Edwin Armstrong.

Second Vice President—Norma Lou Gunn.

Secretary and Treasurer—Dessa Pennington.

Program Chairman—Thomas Burns.

Decoration Chairman—Robert Rothgeb.

The program was closed by singing the school song. The banquet was followed by a dance.



## JUNIOR-SENIOR BANQUET

Juniors and Seniors of the Willow Springs high school boarded the good ship SANTA MARIE Tuesday, May 6, and set sail for Hawaii. There, under the beautiful Hawaiian moon, after a delicious meal this program followed:

Aloha—To the Seniors—Lyle James.  
Royal Palm—To the Juniors—Ruth Ward.  
Fair Hawaii—To the School—Jeweldeen Skaggs.  
Kohuna Magic—To the Faculty—Robert Usrey.  
Blue Hawaii—Betty Light.  
At the Crossroads of the Pacific—Supt. Grimes.  
At the Crossroads—Ruby Lea Montgomery.  
Aloha—William Shelton

Following the program some of the students played games while others went to the Aztec Club for an evening of dancing.

## SENIOR CARNIVAL

The annual Senior Carnival was held Tuesday night, November 12, in the old gymnasium and was a grand success.

There were many attractions, including side shows, night club, bingo stand, picture show, fish pond, ball-throw, and many others.

In the closely-contested race for queen, Frances Mitchell emerged the winner. Dressed in a beautiful blue gown, she came in with Prince Charming Gene Clingan, who placed the shining crown upon her head. Attendants were Katherine Lovan, Naomi Honeycutt, Louella Strome and Mary Sass. Crown Bearer was Mickey Rhodes, and Jean Callihan was the Flower Girl.

Mrs. Gooch was the lucky winner of the beautiful lamp on which chances were bought. A program, highly amusing, and very interesting, was presented.

All in all, it was a "swell" carnival, and we feel right proud of ourselves.

## JUNIOR HIGH ACTIVITIES

The junior high had a very entertaining school year, engaging in many activities. The basketball team won six games, lost two, and won the consolation prize in the tournament.

During the year the junior high gave several plays which were very entertaining. Mr. Atkinson organized the How and Why Club. The officers are Robert Bruce Ferguson, president; Van Bunjer, vice president; Elmo Spencer, secretary; and Jimmy Nelson, reporter.

We did many stunts at the basketball games and took part in the May Festival.

Many of the junior high students play instruments in the high school band and orchestra and attended the contests.

Mr. Plummer has taught us "free-hand" drawing and the making of pottery, both which have been very interesting. Altogether the school year has been very successful.



## SENIOR HIT PARADE

"I'm Waiting for Ships" .....	Helen Bever
"I Can't Love You Anymore" .....	Mary Ella Bever
"I'm Nobody's Baby" .....	Cleva Baker
"In the Mood" .....	Virginia Bergman
"I'm Building Castles in the Air" .....	Arlene Castle
"Ma, He's Making Eyes at Me" .....	Laura Coleman
"I Must Have One More Kiss, Kiss, Kiss" .....	Jane Donley
"Playmates" .....	Beth Ferguson
"Lonesome For You" .....	Velma Ficke
"You're An Angel" .....	Doris Ferguson
"Gold Mine in the Sky" .....	Pauline Frazee
"I Can't Escape from You" .....	Elizabeth Frazee
"Deep Purple" .....	Aliene Gulley
"Always" .....	Mildred Garlett
"You're the Only Star in My Blue Heaven" .....	Clara Belle Gardner
"Writing Love Letters in the Sand" .....	Frances Graves
"Riding Around in the Rain" .....	Thelma Garlett
"I Love to Whistle" .....	Myrtle Godsy
"I Married An Angel" .....	Florence Godat Collins
"Only Forever" .....	Mattie Pearl Garlett
"I Wish I Was Single Again" .....	Donna Bailey Hurst
"High on a Windy Hill" .....	Betty Hansen
"To You Sweetheart, Aloha" .....	Pauline Hunter
"You Walked By" .....	Betty Light
"Down Argentine Way" .....	Katherine Lovan
"Blue Hawaii" .....	Maxine Lovan
"You Go to My Head (rick)" .....	Betty Jane Lilly
"Song of the Island" .....	Novella McCart
"I'll Never Smile Again" .....	Ruby Lea Montgomery
"Red-Headed Woman" .....	Mary Lou Morse
"Strawberry Blond" .....	Maxine Murray
"Big Bad Bill is Sweet William(son) Now" .....	Delores Marden
"When It's (Corn) Pickin' Time" .....	Edith Moore
"Keep An Eye On Your Heart" .....	ClaraBelle Marden



## SENIOR HIT PARADE

"Home On the Range"	Mildred Range
"School Days"	Ora Richter
"Wishing"	Lola Mae Rader
"Let's Dream This One Out"	Rhea Anne Rush
"Lonely"	Ruth Sigman
"When Your Lover Has Gone"	Elsie Spence
"Lover, Come Back To Me"	Janie Strome
"In My Cabin of Dreams"	Marie Sells
"Diana"	Martha Jo Stoll
"Stay in Your Own Back Yard"	Lovene Skaggs
"I Could Make You Care"	Jeweldeen Skaggs
"Stay in My Arms"	June Schneller
"You're the Apple of My Eye"	Marjorie Schleuning
"In A Quiet Sort of Way"	Norma Vandeventer
"South of the Border"	Ruth Ward
"I'm in Love With You Honey(cutt)"	Gene Clingan
"Trade Winds"	Joe Carr
"I Can't Love You Any (Moore)"	Warren Corn
"Scatter Brain"	Claude Ferguson
"Alone"	Everett Graves
"Cross Patch"	Charles Greene
"Donkey Serenade"	Weldon Goodwin
"When the Lillies Are in Bloom"	Basil Hedrick
"Nobody Knows the Trouble I've Had"	John James
"St. Louis Blues"	Ralph Kilpatric
"Rose of Old San Antone"	Lowell McMurtrey
"I'm Just Wild About (Betty)"	Eldon Norman
"So You're the One"	Keith Peterson
"It All Comes Back to Me Now"	Bill Rothgeb
"(Scan't) We Get Along?"	Robert Scantlon
"Tuxedo Junction"	Robert Usrey
"You're A Sweetheart"	Sidney Williamson
"Angry"	Phillip Wyrick
"Did You Ever See a Dream Walking"	Eddie Williams, Jr.
"It Ain't What You Do—It's the Way That You Do It"	Rudolph Walthers



## CAN YOU IMAGINE---

1. Helen Bever not talking about Bob?
2. Mary Ella Bever without Jack Hansen's picture?
3. Cleva Baker not giggling?
4. Virginia Bergman keeping quiet?
5. Arlene Castle talking all the time?
6. Laura Coleman not flirting?
7. Jane Donley on a diet?
8. Velma Ficke keeping a secret?
9. Beth Ferguson flirting?
10. Doris Ferguson reciting in class?
11. Pauline Frazee with lots of dates?
12. Elilabeth Frazee doing a bubble dance?
13. Aliene Gulley getting her bookkeeping herself?
14. Mildred Garlett not worrying about grades?
15. Clara Belle Gardner with her mouth shut?
16. Frances Graves Mitchell an old maid?
17. Thelma Garlett satisfied?
18. Myrtle Godsy not talking?
19. Florence Godat Collins cooking the family meal?
20. Mattie Pearle Garlett humped-back?
21. Donna Bailey Hurst with her hands in dish water?
22. Betty Hansen as a "Glamour Gal"?
23. Pauline Hunter quiet during class?
24. Betty Light not hunting a way to Cabool?
25. Katherine Lovan being called down by student council?
26. Maxine Lovan saving on postage?
27. Betty Jane Lilly being an orchid?
28. Novella McCart being a movie star?
29. Ruby Lea Montgomery not talking baby talk?
30. Mary Lou Morse happy again?
31. Maxine Murray wearing a long skirt?
32. Delores Marden not wanting to teach?
33. Edith Moore wearing make-up?
34. Clara Belle Marden singing a torch song?
35. Janie Strome doing the rhumba?



## CAN YOU IMAGINE---

36. Warren Corn driving within the speed limit?
37. Gene Clingan "jitterbugging"?
38. Mildred Range getting up in time for school?
39. Ora Richter making noise?
40. Lola Mae Rader in a convent?
41. Rhea Anne Rush making up her mind which boy she wants?
42. Ruth Sigman making a speech?
43. Elsie Spence being a midget in a side show?
44. Marie Sells not studying?
45. Martha Jc Stoll causing trouble?
46. Lovene Skaggs doing the big apple?
47. Jeweldeen Skaggs without her charming smile?
48. June Schneller without a letter from somebody?
49. Marjorie Schleuning entering an igloo?
50. Norma Vandeventer a night club singer?
51. Ruth Ward making an F?
52. Joe Car singing a solo?
53. Claude Ferguson charming snakes?
54. Everett Graves not chewing gum.
55. Charles Greene herding goats?
56. Weldon Goodwin doing the Blue Danube?
57. Basil Hedrick all excited?
58. John James in a hurry?
59. George Johnson with Mildred Smith?
60. Ralph Kilpatric six feet tall?
61. Lowell McMurtrey leading an orchestra?
62. Eldon Norman picking on somebody his size?
63. Keith Peterson with a girl?
64. Bill Rothgeb plowing corn?
65. Robert Scantlon talking to a girl without blushing?
66. Robert Usrey going steady?
67. Sidney Williamson being serious?
68. Phillip Wyrick a preacher?
69. Junior Williams growing into an adult?
70. Rudolph Walthers directing a choir?



## PEEP INTO THE FUTURE

Edith Moore and Mary Lou Morse are leading dress designers. Working for them is Mary Ella Bever.

Arlene Castle runs a large beauty shop. Those working for her are Laura Coleman, Aliene Gulley, Pauline Hunter, Betty Jane Lilly and Ruth Sigman.

Betty Hansen now runs a school for nurses. Those enrolled are Cleva Baker, Jane Donley, Frances Graves, Mattie Pearle Garlett, Janie Strome, Maxine Murray and Norma Vandeventer.

A teachers convention was held this month and those attending from here were Doris and Beth Ferguson, Mildred Garlett, Clara Belle Gardner, Thelma Garlett, Myrtle Godsy, Mrs. Florence Collins, Novella McCart, Delores Marden and Elsie Spence.

Two college girls are home for the week-end, Rhea Anne Rush and Katherine Lovan.

Charles Greene runs a truck line between here and Cabool, two of his drivers are Keith Peterson and Phillip Wyrick.

Two home town boys won medals for bravery from the army. They are Sidney Williamson and Weldon Goodwin.

Everett Graves has been acclaimed favorite car mechanic by the housewives of the town. The judges were the formers: Helen Bever, Donna Bailey, Maxine Lovan and Lola Mae Rader.  
New York City—

Joe Carr now runs a furniture store. His chief salesmen are John James and Ralph Kilpatric.

Claude Ferguson, noted ornithologist, opened his museum to the public last week.

Lovene Skaggs won honors as being the best librarian in New York. Her sister is the noted illustrative artist, Jeweldeen Skaggs.

Eldon Norman runs an air line. His chief stewardess is Clara Belle Marden. The chief aviator is Robert Scantlon.

The journalist, Bill Rothgeb, reports that Rudolph Walthers just signed with the New York Yankees.

The two song birds heard over Station WSHS at 2:30 p. m. are Ruby Lea Montgomery and Betty Light. They will sing any special requests from Willow Springs students.

Basil Hedrick, mechanical engineer, Robert Usrey, electrical engineer, and Junior Williams, deisel engineer, have formed a corporation. Their chief accountant is George Johnson. Their lawyer is Lowell McMurtrey. Those now on their office staff are Ruth Ward, Marjorie Schleuning, June Schneller, Martha Jo Stoll, Marie Sells, Ora Richter, Mildred Range, Elizabeth and Pauline Frazee, Velma Ficke, Virginia Bergman.

Two noted people were in town over the week-end. Coach Gene Clingan, whose Missouri Tigers won the Rose Bowl, and Detective Warren Corn, who is resting after he has just finished capturing the kidnapper of Prof. W. C. Grimes.

Pauline and Elizabeth Frazee leave their studious ability to Burnys Donley and Don Rothgeb, respectively.



## CLASS WILL

### LAST WILL AND TESTAMENT OF THE SENIOR CLASS

"Boogy" Usrey leaves his ability to "truck" to Johnie C. Stone  
Katherine Lovan leaves her sense of humor to Irvin L. Masnor.  
Jane Donley leaves the state of Missouri to Kent Twyman.  
ClaraBelle Marden leaves her silly laugh to any one who can imitate it.

Junior Williams leaves his ability to get to his first class on time to anyone with a trusty alarm clock.

Weldon Goodwin leaves his knowledge of football to the forthcoming team.

Charles Greene leaves Kathy L. to anyone who is capable of winning her affection.

Janie Strome leaves her magnetic power over men to Louella Strome.  
To all prospective brides, Florence Collins leaves some helpful tips.  
Betty Jane Lilly leaves her quiet, unsophisticated manner to Mary Sass.  
Rhea Anne Rush leaves her ability to clerk in a store to anyone who is not troubled with sore feet.

Donna Hurst bequeaths her naturally curly hair to Margaret Berry.

Gene Clingan and Eldon Norman leave their mutual affection with Naomi Honeycutt and Betty Jo Revard.

With a sigh of regret Sidney Williamson leaves his unsurpassed giggle to Francis Pfister.

Ruby Lea Montgomery leaves her amazing gum-chewing ability to Mary Lawrence O'Kelley.

Warren Corn refuses to will Edith Moore to anyone—out of luck, fellows.

Phil Wyrick leaves his Casanova complex to all the bashful boys of W. S. H. S.

Hopefully, Claude Ferguson leaves his Ford to anyone who can keep it running.

Bill Rothgeb leaves his quiet, polite mannerisms to Floyd Lasley.

Lowell McMurtrey leaves his surprising speed on the dance floor to Billy Morris Oliver.

Velma Ficke leaves her lovely blond hair to Margaret Ward.

The Bever girls leave their red hair to Maxine Williams.

The Garlett girls leave their charming blushes to Evelyn Puckett.

Rudolph Walthers leaves his "Big Me, little you" attitude to Eldon Graves.

Betty Light leaves her ability at attempting to diet to Hazel Coulter

John James leaves his ability to skip school on exemption day to Ted Seibers—who incidently did all right before he received the will.

Ralph Kilpatric leaves his slight stature to Don Phillips.

Robert Scantlon leaves his harmless little flirtations to Eob Schneider.

Everett Graves leaves his blond hair to Bill Brumley.

Joe Carr leaves his manly silence to the study hall.

George Johnson leaves his superior knowledge to anyone who needs it.

Laura Coleman leaves her ability to sleep in class to Donald Henry.

Pauline Hunter and Ruth Ward will their long lasting friendship to Sybil Lovan and Madge Lena Bennett.

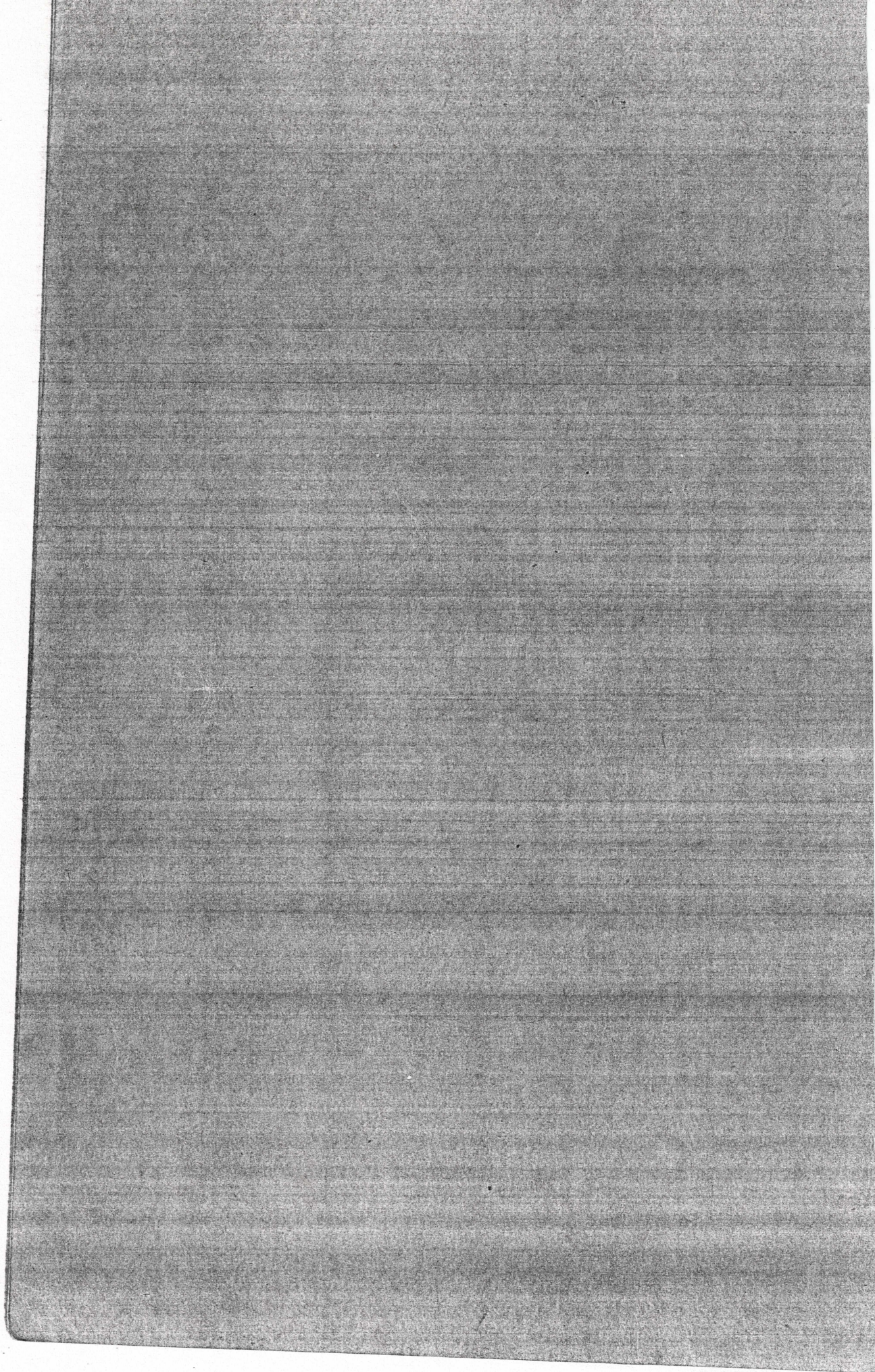
Maxine Lovan leaves her ability to wait for her man to anyone who thinks she wants too.



BOOK VI

**ADVERTISEMENTS**







The 1941 Willamizzou

---

Put Your John Henry Here . . .



*\$3.00* BEST WISHES

*Sold*  
WILLOW SPRINGS  
LUMBER CO.

—Phone 51—

30 Years On Same Corner

*\$3.00*

*Sold*

COMPLIMENTS

of the

~~Ben Franklin Store~~

~~G. B. ...~~

*1.50*

We Welcome Our Guests

*Sold*  
Horton Hotel

WILLOW SPRINGS, MO.

*1.50*

*Sold*

Burns & Sons

*1.50* BEST WISHES

Class of '41

LILLY'S

Willow Springs — Houston

ALWAYS WELCOME

At The

First

*Jane  
Cawley*  
Baptist Church

FRED McPHAIL, Pastor



#10. <sup>00</sup>  
dl

**FERGUSON**

Sold

**DRUG**

**STORE**

The Rexall Store

WILLOW SPRINGS, MISSOURI



*\$3.00*

~~\_\_\_\_\_~~

**Masnor's**  
*Sold*  
 WILLOW SPRINGS, MO.

---

Meats and Groceries

~~We Give Eagle Stamps~~

*\$3.00*

**Congratulations**  
*Sold*  
 To all students who seek and are  
 fortunate enough to get an  
 education.

**Missouri Electric  
 Power Co.**  
 WILLOW SPRINGS, MO.

Come in and have your own per-  
 sonality portrayed in one of our  
 natural life-like photographs.

*Change to 1/2 page*

*Sold*  
**Wayne Smuck**  
**Studio**  
 WILLOW SPRINGS, MO.

*\$3.00*

**Study Business**  
 And Increase Your Earning  
 Capacity  
*Sold*  
 ATTEND

**Springfield Draughon's  
 Business University**  
 SPRINGFIELD, MISSOURI



The 1941 Willamizzou



The Best of Luck To You . . . .

And may we suggest at this time  
that one of the greatest helps to-  
ward success is to look your best.

"IT PAYS TO DRESS WELL"

**Chas. Ferguson**

Hart, Schaffner & Marx Clothes



**Pepsi-Cola**

THEY'LL SEE YOU



**Farmers Co-Operative  
Exchange**

The Farmers Owned and Con-  
trolled Store.

Phone 261

~~RUSSELL CORN~~, Manager

*Scuse*  
Best Wishes for the Senior Class  
of '41 for Health, Happiness and  
Prosperity.

**Ozark Typewriter Co.**

402 S. Jefferson Street

SPRINGFIELD, MISSOURI



*Sold* \$6.00

## State Bank of Willow Springs

MEMBER OF  
FEDERAL DEPOSIT INSURANCE COMPANY

Capital & Surplus \$50,000.00  
~~Maximum Deposit \$5,000.00~~

→ 1.50

\$3.00  
*Sold*

## Old Bros. Store

2.00

*Sold* \$1.50

## Padgett Hardware

The Complete Hardware Store  
WILLOW SPRINGS, MO.

→ 1.50

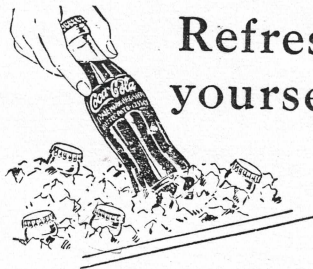
*Sold* \$1.50

## Dr. D. O. Halbrook

OPTOMETRIST  
Jewelry and Optical Store  
Box 363 Willow Springs, Mo.



\$ 6.00



Refresh  
yourself

DRINK  
*Coca-Cola*

This coupon redeemed for cash on  
tuition if returned by June 20

\$ 1.50

~~Gertrude's~~  
~~Beauty College~~

SPRINGFIELD, MISSOURI

\$ 3.00

COMPLIMENTS OF

*The*  
*Willow Springs*  
*News*

*Sold*

\$ 1.50

**Christian Church**

WELCOMES

YOU

*Sold*



