

But oh, my school, that dearer place,
Fulfilled of wistfulness and grace,
I bear it in all tenderness
Within my breast, with radiant face,
'Blessing, as it myself did bless!

—Wallace Rice.





But oh, my school, that dearer place,
 Fulfilled of wistfulness and grace,
 I bear it in all tenderness
 Within my breast, with radiant face,
 'Blessing, as it myself did bless!

—Wallace Rice.

The Alumni

| NAME | OCCUPATION OR NAME OF HUSBAND. | RESIDENCE |
|----------------------|--|--------------------------|
| CLASS OF 1895 | | |
| Lina Dawes | Assistant Cashier Bank of Willow Springs | Willow Springs, Missouri |
| Phrona Lovan | Chas. Ferguson | Willow Springs, Missouri |
| Agnes Davis | Mr. Anderson | |
| Elsie Stanley | F. C. Topping | Lawrence, Kansas |
| Edna Stiles | Deceased | |
| Pearl Bartley | Deceased | |
| Susie Hinds | Deceased | |
| CLASS OF 1896 | | |
| Susie Bartley | William Irwin | Jefferson City, Mo. |
| Egbert E. Randle | Merchant | Mountain Grove, Mo. |
| Tress Stanley | L. M. Nichols | Bristow, Okla. |
| Ethel Scott | Walker Cundiff | Wichita Falls, Texas |
| Lella Hill | Prof. E. L. Hume | St. Louis, Mo. |
| Walter Tarleton | Salesman Brown Shoe Co. | St. Louis, Mo. |
| Harry Baldrige | Inspector of Munitions | Washington, D. C. |
| CLASS OF 1897 | | |
| Sylvia Higgins | Joe Austin | Salem, Oregon |
| Lettie Featheringill | Dr. S. E. Coffee | St. Louis, Mo. |
| Fay Voohers | Dr. Earl Hamil | Pocahontas, Ark. |
| Ethel Lovewell | Oscar T. Bergner | Ashland, Oregon |
| Edith Lovewell | C. W. Taylor | Long Beach, Calif. |
| CLASS OF 1899 | | |
| Birdie Hoyer | | |
| Nell Rankin | Mr. Kessler | Kansas City, Mo. |
| Bertha Harris | | |
| Warren Whitman | | |
| CLASS OF 1900 | | |
| Mary W. Campbell | J. Fent Chapin | West Plains, Mo. |
| CLASS OF 1901 | | |
| Anna Angersbach | J. C. Graves | Springfield, Mo. |
| Fannie Anson | Deceased | |
| CLASS OF 1902 | | |
| Carrie Anson | Sam Preston | Willow Springs, Missouri |
| Eva Loftis | J. W. Hornstein | St. Louis, Mo. |
| CLASS OF 1903 | | |
| Bertha Wajler | J. A. Crutchfield | Broken Arrow, Okla. |
| CLASS OF 1904 | | |
| Flora Besheer | Dr. E. M. LeCompte | Brookline, Mo. |
| Ivan Rowe | Clerk | Omaha, Neb. |
| Homer Ferguson | Insurance and Real Estate | Willow Springs, Missouri |
| Ray Comley | Deceased | |
| CLASS OF 1905 | | |
| Mabelle O'Bannon | Louis LaVelle | Springfield, Mo. |
| Maude Switzer | A. A. Widick | Pleasanton, Kan. |
| Elmer Abernathy | Electrician | Dixon, Mo. |
| Archie Anderson | Merchant | Willow Springs, Missouri |
| Cecil Vosburg | Farmer | Malta, Idaho |

Dr. Almond

1891

1892

1893

1894

1895

1896

1897

1898

1899

1900

1901

1902

1903

1904

1905

1906

1907

1908

1909

1910

1911

1912

1913

1914

1915

1916

1917

1918

1919

1920

1921

1922

1923

1924

1925

1926

1927

1928

1929

1930

CLASS OF 1906

| | | |
|-------------------|---------------------------|--------------------------|
| Mamie Davis | Assistant Bank Cashier | Peculiar, Mo. |
| Goldie Dougherty | J. L. Kenreigh | Coffeyville, Kansas |
| Lola Hutchinson | Robert K. Hegler | Ellinwood, Kansas |
| Nellie Sass | Bonum Lewis | Wyaconda, Mo. |
| Claude Besheer | Frisco Ry. Civil Engineer | Springfield, Mo. |
| J. Orval Ferguson | Mail Carrier | Willow Springs, Missouri |
| Sam Davis | Oil Business | Tulsa, Okla. |

CLASS OF 1907

| | | |
|-----------------|-------------------------------|--------------------------|
| Minnie Payne | Walter Early | Willow Springs, Missouri |
| Guy Koons | Assistant Postmaster | De Witt, Mo. |
| Frank Sass | Farmer | Willow Springs, Missouri |
| Millard Shibley | Chief Engineer M. K. & T. Ry. | Dallas, Texas |

CLASS OF 1908

| | | |
|----------------|------------|-------------------|
| Mabelle Lovan | Henry Hull | Hays City, Kansas |
| Willa Redding | Wm. Mackey | Springfield, Mo. |
| Harold Rowe | Chemist | St. Louis, Mo. |
| Harold Younker | Merchant | Candor, N. Y. |

CLASS OF 1909

| | | |
|----------------|-----------------------|-----------------------|
| Ellen Crosby | Teacher | Magdalena, New Mexico |
| Laurel Johnson | Santa Fe Railroad Co. | Clovis, New Mexico |
| Naomi Martin | William Masterson | Buckner, Mo. |
| Edna O'Bannon | Saleslady | Springfield, Mo. |

CLASS OF 1910

| | | |
|------------------|------------------------------|--------------------------|
| Roy Kendig | Bank Cashier | Chug Water, Okla. |
| Harry Fleming | Assistant Cashier State Bank | Willow Springs, Missouri |
| Wayne Turner | Mail Carrier | Deer Park, Wash. |
| Lucille Howard | | Russellville, Ken. |
| Edna Benton | Dan Fleming | Springfield, Mo. |
| Viola Zenor | Frank Austin | Willow Springs, Missouri |
| Ruth Holland | O. L. Kimmel | Mountain Grove, Mo. |
| Artelle LeCompte | O. J. Peters | Willow Springs, Missouri |

CLASS OF 1912

| | | |
|-------------|-------------------|--------------------------|
| Leona Davis | Teacher | Willow Springs, Missouri |
| Adolph Sass | Hardware Business | Willow Springs, Missouri |

CLASS OF 1913

| | | |
|-----------------|--------------------------|--------------------------|
| Stanley Barnes | K. C. School of Pharmacy | Kansas City, Mo. |
| Helen Osmun | Teacher | Willow Springs, Missouri |
| Willie Preston | Assistant Postmistress | Willow Springs, Missouri |
| Paul F. Redding | Steel Gang Time-keeper | Willow Springs, Missouri |

CLASS OF 1914

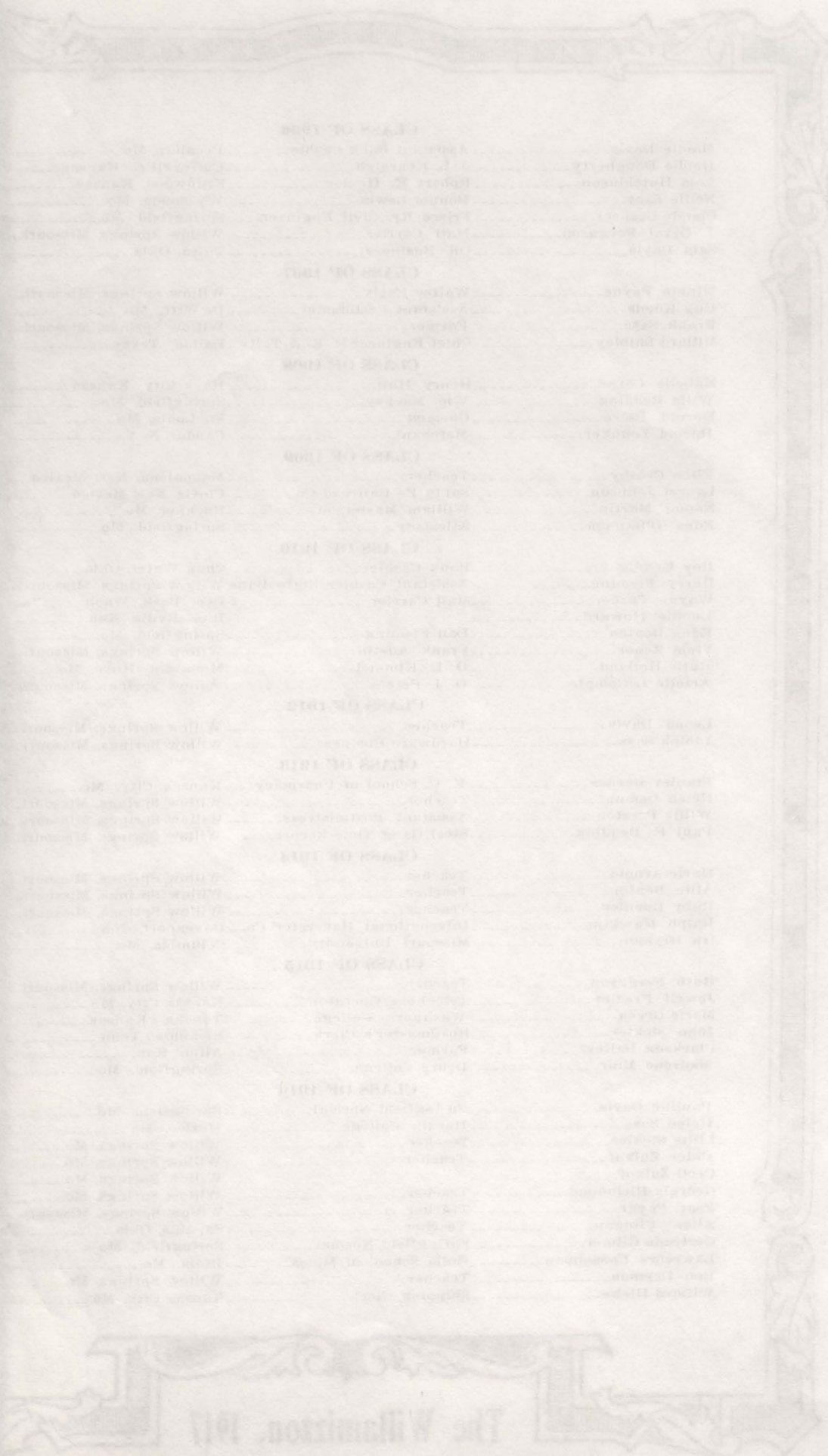
| | | |
|---------------|-----------------------------|--------------------------|
| Marie Arnold | Teacher | Willow Springs, Missouri |
| Allie Benton | Teacher | Willow Springs, Missouri |
| Ruby Buckles | Teacher | Willow Springs, Missouri |
| Ralph Hawkins | International Harvester Co. | Davenport, Iowa |
| Ira Drymon | Missouri University | Columbia, Mo. |

CLASS OF 1915

| | | |
|-----------------|--------------------|--------------------------|
| Ruth Ferguson | Teacher | Willow Springs, Missouri |
| Jewell Frazier | Telephone Operator | Kansas City, Mo. |
| Marie Green | Washburn College | Topeka, Kansas |
| John Sickles | Roadmaster's Clerk | Memphis, Tenn. |
| Clarkson Bailey | Farmer | Alton, Kan. |
| Madrene Muir | Drury College | Springfield, Mo. |

CLASS OF 1916

| | | |
|--------------------|-----------------------|--------------------------|
| Pauline Davis | Springfield Normal | Springfield, Mo. |
| Helen Sass | Hardin College | Mexico, Mo. |
| Lillie Sickles | Teacher | Willow Springs, Mo. |
| Chloe Zulauf | Teacher | Willow Springs, Mo. |
| Cecil Zulauf | | Willow Springs, Mo. |
| Georgia Richmond | Teacher | Willow Springs, Mo. |
| Pearl Payne | Teacher | Willow Springs, Missouri |
| Allen Clingan | Teacher | Sapulpa, Okla. |
| Gertrude Gilmer | Springfield Normal | Springfield, Mo. |
| Lawrence Casselman | Rolla School of Mines | Rolla, Mo. |
| Ben Drymon | Teacher | Willow Springs, Mo. |
| Willard Hicks | Shipping Clerk | Kansas City, Mo. |



CLASS OF 1908

John A. ...
Robert E. ...
John A. ...
John A. ...
John A. ...
John A. ...
John A. ...
John A. ...
John A. ...
John A. ...

CLASS OF 1907

John A. ...
Robert E. ...
John A. ...
John A. ...
John A. ...
John A. ...
John A. ...
John A. ...
John A. ...
John A. ...

CLASS OF 1906

John A. ...
Robert E. ...
John A. ...
John A. ...
John A. ...
John A. ...
John A. ...
John A. ...
John A. ...
John A. ...

CLASS OF 1905

John A. ...
Robert E. ...
John A. ...
John A. ...
John A. ...
John A. ...
John A. ...
John A. ...
John A. ...
John A. ...

CLASS OF 1904

John A. ...
Robert E. ...
John A. ...
John A. ...
John A. ...
John A. ...
John A. ...
John A. ...
John A. ...
John A. ...

CLASS OF 1903

John A. ...
Robert E. ...
John A. ...
John A. ...
John A. ...
John A. ...
John A. ...
John A. ...
John A. ...
John A. ...

CLASS OF 1902

John A. ...
Robert E. ...
John A. ...
John A. ...
John A. ...
John A. ...
John A. ...
John A. ...
John A. ...
John A. ...

CLASS OF 1901

John A. ...
Robert E. ...
John A. ...
John A. ...
John A. ...
John A. ...
John A. ...
John A. ...
John A. ...
John A. ...

CLASS OF 1900

John A. ...
Robert E. ...
John A. ...
John A. ...
John A. ...
John A. ...
John A. ...
John A. ...
John A. ...
John A. ...

| |
|------|
| 1908 |
| 1907 |
| 1906 |
| 1905 |
| 1904 |
| 1903 |
| 1902 |
| 1901 |
| 1900 |



BEULAH AILEEN MAY.

Glee Club. Play. German Club.
Booster Club Tennis.

"Beulah" entered the class this year from the Barbourville Baptist College and brings with her the sunny atmosphere of the hills of old Kentucky. She is looked upon as a "model" but as the song runs "There's a little bit of bad in every good little girl." At once stepping into a group of admiring friends she has proved herself an apt student and a genuine booster.

PAUL DODGE AUSTIN.

Athletics. Booster Club. Play.

"Bootjack Jerry" is his full title and his honors are equally divided between good looks and good basket ball. "Jerry" is a persistent fusser, an extreme dresser and a full-fledged ladies' man. He acts like he was born tired but when he gets started—look out, there's something stirring, sure. "Jerry" is a general favorite and a "jolly good fellow everyplace."





MABLE MARIE SASS.

Glee Club. Booster Club. Play.

"Mabel" is Hattie's chum but doesn't like it known that Hattie sometimes helps her on a theorem. Being averse to publicity, it was a surprise when she consented to have her picture in the Willamizzou." Seemingly she has a single purpose—to see as much as possible of "one" person and as little as possible of others. Nevertheless she has won a large circle of admiring friends.

Post Graduate Department

BEN DRYMON.



Allie Drymon.

*Has them all taking back seats
when it comes to talking.*

Tom Austin.

Has only one thought—Mable.

Fahn Tate.

*Never says much but when she
does it counts.*

Cecil Buckles.

“Buck”

Thinks he's good looking.

Gladys Shipley.

*Talks a great deal but doesn't say
much.*

Hobart Madison.

“Maddy”

*Resembles a Ford—when he gets
started he can't stay on the ground*

After the war
the first of these, the
first of these, the first of these

From the first
the first of these, the first of these

From the first
the first of these, the first of these

From the first
the first of these, the first of these

From the first
the first of these, the first of these

From the first
the first of these, the first of these



Maureen Masnor
There's A Little Bit of Bad In
Every Good Little Girl.

Harold Rothgeb
"Doc"
I Love the Ladies

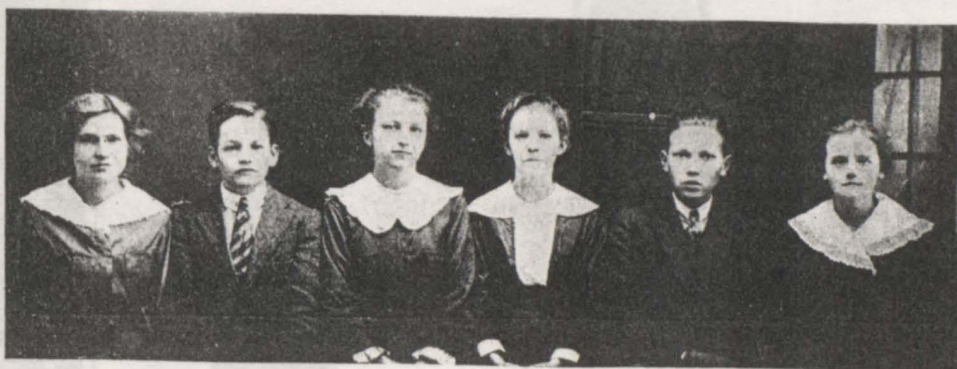
Thelma Harkey
Pretty Baby.

Helen May
Don't Take My Darling Boy
Away.

Finley Muir, Jr.
"Fish"
I want a Little Lovin' Sometimes

Madeline Livingston
"Mit"
The Curse of A Pretty Face.

Try These Over on Your Piano



Arrelle White
I'm Glad My Mamma Don't
Know Whee I'm At.

Raymond Martin
"Henry"
When I Get Big Like Papa.

Leola Lovan
The Little Things That Count.

Myrtle Suss
"Myrt"
Can't You See I'm Lonely.

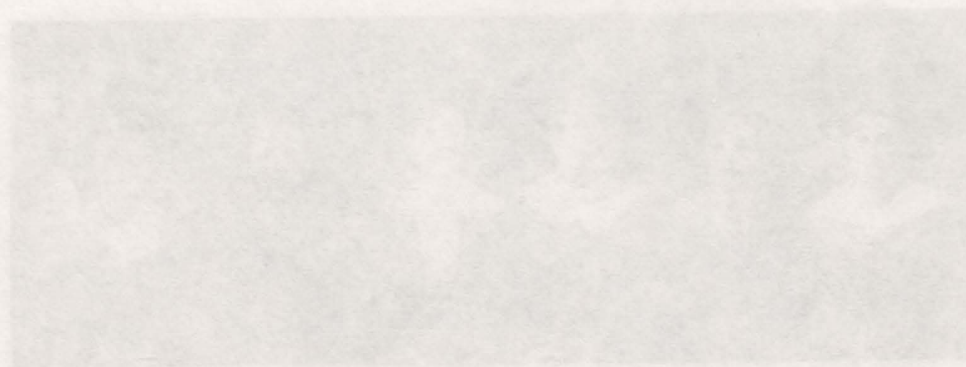
Paul Regan
I'm Looking For My Papa.

Lois Burkdoll
Her Golden Hair Was Hanging
Down Her Back



THE
WILLIAMSON
1917

THE
WILLIAMSON
1917



THE
WILLIAMSON
1917



Austin,—'17
Forward.



Drymon,—'17
Forward.



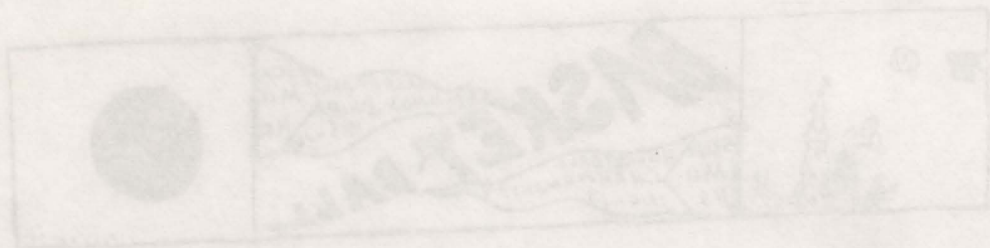
McClain,—'17
Center



Arnold,—'17, Captain
Guard.



Kendig,—'17
Guard.



Wicket
Keeper



Wicket
Keeper



Wicket
Keeper



Wicket
Keeper



Wicket
Keeper

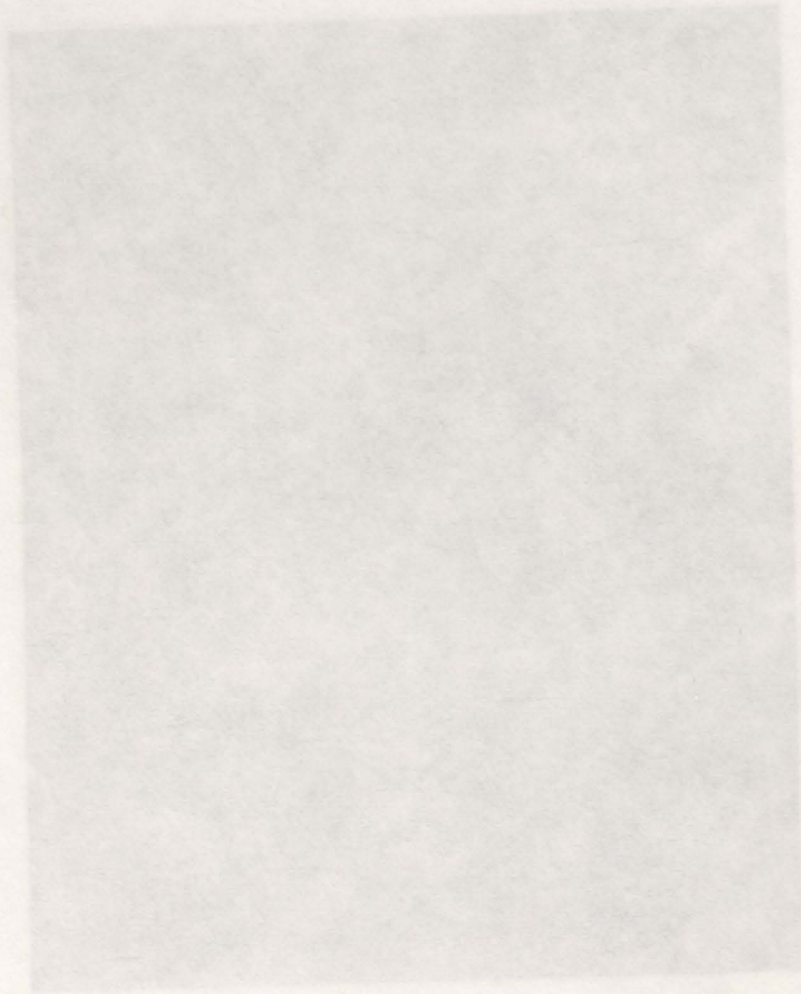
The Cubs



Top Row—Madison, forward; Buckles, guard; Sass, forward and captain. Bottom row—Muir, center; Payne, guard.

The Willamizzou, 1917

John 9: 34



Two lines—standing forward! Another, another! Back, forward! and
another! Another row—again, another! Forward, again!

